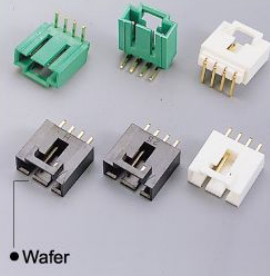


W7166 Series 2.54mm Wafer

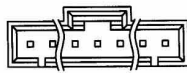


● Wafer

W
7166
—
02
P
S
G
B
0
0

- | | | |
|---|---|---|
| <p>1. PRODUCTS:
W:Wafer</p> <p>2. SERIES NO.:
7166</p> <p>3. CONTACT NO.:
02-12</p> | <p>4. CONTACT TYPE:
P:Non Distribution</p> <p>5. FUNCTION:
S:Straight
R:Right Angle</p> <p>6. CONTACT PLATING:
T:Tin
G:Gold Flash</p> | <p>7. INSULATOR COLOR:
B:Black
W:White
E:Green
Y:Yellow</p> <p>8. FILL IT WITH "0"</p> <p>9. FILL IT WITH "0"</p> |
|---|---|---|

1 W7166-XXPXXX00R CD ROM 2.54mm WAFER W/O LOCATING PEG



Straight Angle



Right Angle



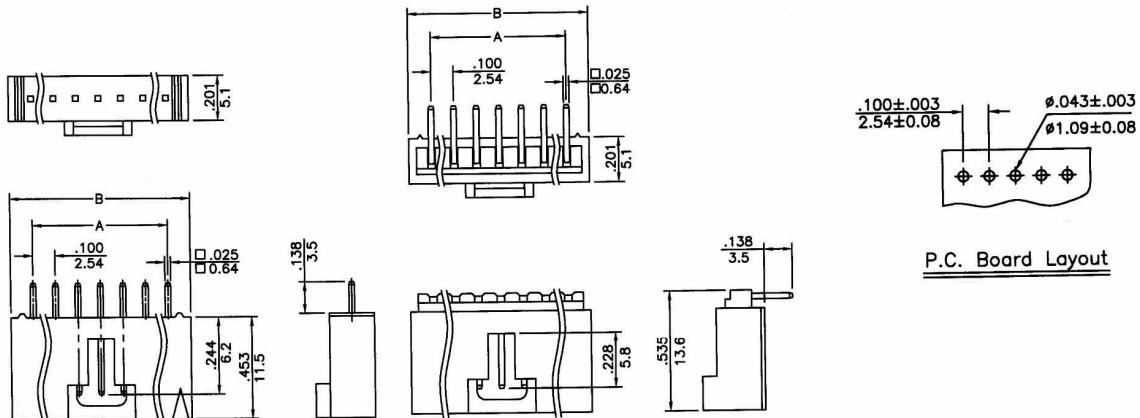
(2P)

(3P)

- * Poles:2-18
- * Material:Insulator:PBT UL94V-0 BLACK
- * Contact:0.64mm(.025") square pin,brass,gold

Specifications

- * Current rating: 2.5A AC, DC
- * Voltage rating: 250V AC, DC
- * Temperature range: -25°C~+85°C
- * Insulation resistance: 1,000MΩ min.
- * Withstand voltage: 600 AC/minute
- * Applicable PC board thickness: .063" (1.6mm)



CIRCUITS	DIMENSION in.(mm)		CIRCUITS	DIMENSION in.(mm)	
	A	B		A	B
2	0.100(2.54)	0.300(7.62)	11	1.000(25.40)	1.200(30.48)
3	0.200(5.08)	0.400(10.16)	12	1.100(27.94)	1.300(33.02)
4	0.300(7.62)	0.500(12.70)	13	1.200(30.48)	1.400(35.56)
5	0.400(10.16)	0.600(15.24)	14	1.300(33.02)	1.500(38.10)
6	0.500(12.70)	0.700(17.78)	15	1.400(35.56)	1.600(40.64)
7	0.600(15.24)	0.800(20.32)	16	1.500(38.10)	1.700(43.18)
8	0.700(17.78)	0.900(22.86)	17	1.600(40.64)	1.800(45.72)
9	0.800(20.32)	1.000(25.40)	18	1.700(43.18)	1.900(48.26)
10	0.900(22.86)	1.100(27.94)			

ELECTRONIC COMPONENTS

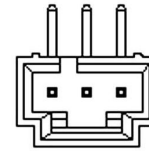
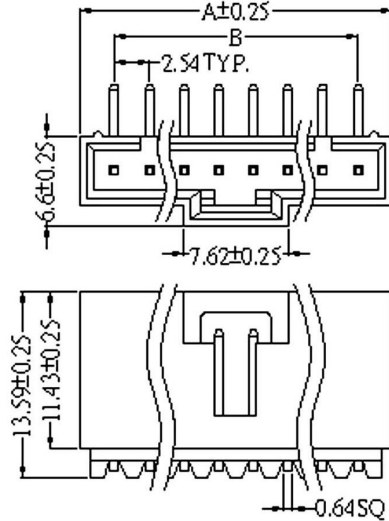
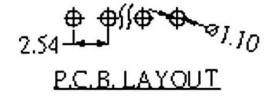
2

W7166-XXPRGB00R**CD ROM 2.54mm WAFER 90° W/O LOCATING PEG**

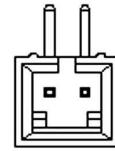
Insulator: Glass-Filled Polyamide, UL 94V-0

Color: Black

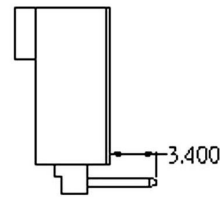
Conductor: Brass/Gold Flash



3P



2P



CIRCUITS	Dim.A	Dim.B
2	7.62	2.54
3	10.16	5.08
4	12.70	7.62
5	15.24	10.16
6	17.78	12.70
7	20.32	15.24
8	22.86	17.78
9	25.40	20.32
10	27.94	22.86

ELECTRONIC
COMPONENTS