

## W2103 Series 2.0mm Wafer

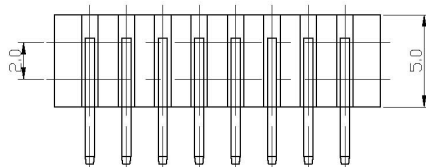
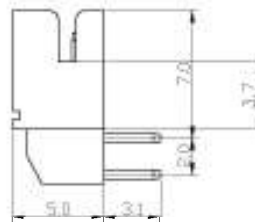
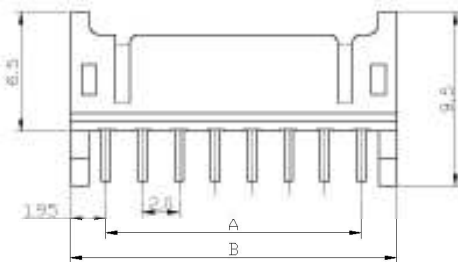
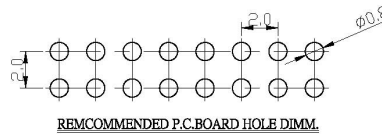
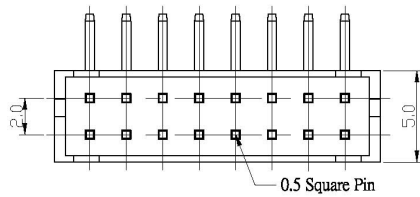


W
2103
—
02
P
S
S
T
B
W

- |  |  |   |   |
|--|--|---|---|
| <p>1. PRODUCTS:<br/>W:Wafer</p> <p>2. SERIES NO.:<br/>2103</p> <p>3. CONTACT NO.:<br/>02-16 (Single Row)<br/>06 (2x3) - 32 (2x16)<br/>(Dual Row)</p> | <p>4. CONTACT TYPE:<br/>P: Non Distribution</p> <p>5. ROW TYPE:<br/>S: Single Row<br/>D: Dual Row</p> <p>6. FUNCTION:<br/>S: Straight<br/>R: Right Angle<br/>A: S.M.T. Straight<br/>(Single Row)</p> | <p>B: S.M.T. Right Angle<br/>(Single Row)</p> <p>7. CONTACT PLATING:<br/>T: Tin<br/>S: Selective Gold<br/>G: Gold Flash</p> <p>8. PACKING STYLE:<br/>B: Bag<br/>T: Tube<br/>R: Reel</p> | <p>Q: PAD+Reel</p> <p>9. OTHERS:<br/>W: White<br/>L: Blue<br/>R: Red<br/>B: Black</p> |
|--|--|---|---|

1

### W2103-XXPDRXXWR JST PHD 2.0mm WAFER DUAL ROW 90° INSULATOR



#### SPECIFICATIONS

**Electrical**  
 Current Rating: 2A AC/DC  
 Voltage Rating: 250V AC, DC  
 Operating Temp.: -25°C ~ +85°C  
 Contact Resistance: 20mΩ/Max.  
 Insulation Resistance: 1000MΩ/Min.

#### Material

Terminal Material: Brass/ Tin-plated/ Gold-plated  
 Material: Nylon 66, UL 94V-0

Poles	Dimension mm (in.)		Note.
	A	B	
6	4.0	8.0	
8	6.0	10.0	
10	8.0	12.0	
12	10.0	14.0	
14	12.0	16.0	
16	14.0	18.0	
18	16.0	20.0	
20	18.0	22.0	
22	20.0	24.0	
24	22.0	26.0	
26	24.0	28.0	
28	26.0	30.0	
30	28.0	32.0	
32	30.0	34.0	

#### ORDER INFORMATION

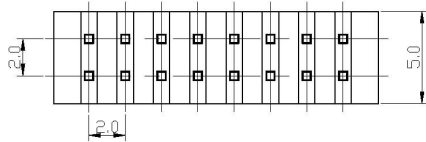
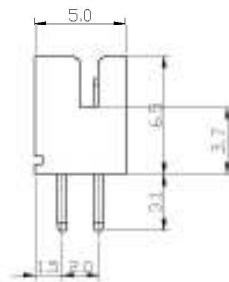
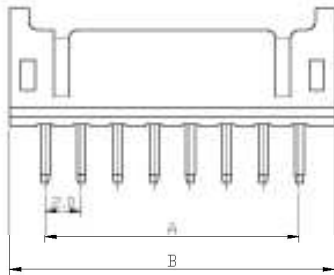
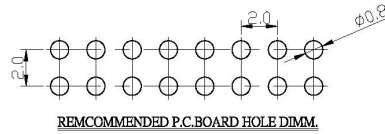
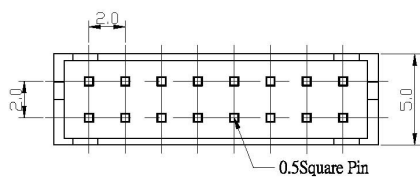
W2103-XXPDRXXWR

- |   |  |  |
|---|--|--|
| 1. CONTACT NO.<br>02 - 16 (SINGLE ROW)<br>06(2x3) - 32(2x16) (DUAL ROW) | 5. CONTACT PLATING<br>T: TIN<br>S: SELECTIVE GOLD<br>G: GOLD FLASH       | 7. OTHERS:<br>W: WHITE<br>8. ROHS LOW LEAD |
| 2. CONTACT TYPE<br>P: NON DISTRIBUTION                                  | 6. PACKING STYLE<br>B: BAG PACKING<br>T: TUBE PACKING<br>R: REEL PACKING |  |
| 3. ROW TYPE<br>D: DUAL ROW  |  |  |
| 4. FUNCTION:<br>R: RIGHT ANGLE  |  |  |

ELECTRONIC COMPONENTS

2

**W2103-XXPDSXXWR**  
**JST PHD 2.0mm WAFER DUAL ROW 180° INSULATOR**



Specification

Current Rating: 2A AC/DC  
Voltage Rating: 250V AC, DC  
Operating Temp: -25°C ~ +85°C  
Contact Resistance: 20mΩ Max  
Insulation Resistance: 1000MΩ Min  
Terminal Material: Brass/ Tin-plated/ Gold-plated  
Material: Nylon 66, UL 94V-0

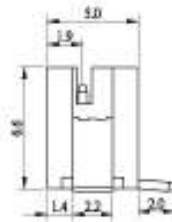
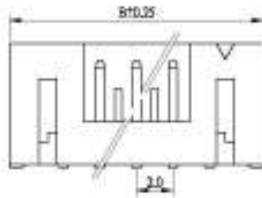
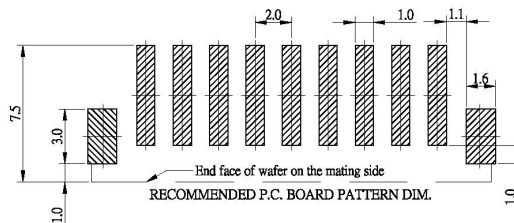
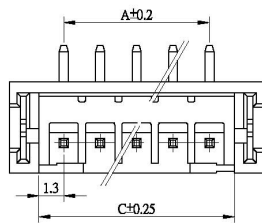
Poles	Dimension mm (in.)		Note.
	A	B	
6	4.0	8.0	
8	6.0	10.0	
10	8.0	12.0	
12	10.0	14.0	
14	12.0	16.0	
16	14.0	18.0	
18	16.0	20.0	
20	18.0	22.0	
22	20.0	24.0	
24	22.0	26.0	
26	24.0	28.0	
28	26.0	30.0	
30	28.0	32.0	
32	30.0	34.0	

ORDER INFORMATION

W2103-XX P D S X X W R  
 1 CONTACT NO. 06(2x3) - 32(2x16) (DUAL ROW) 2 CONTACT TYPE: P: NON DISTRIBUTION 3 ROW TYPE: D: DUAL ROW 4 FUNCTION: S: STRAIGHT  
 5 CONTACT PLATING: T: TIN 6: SELECTIVE GOLD 7 OTHERS: W: WHITE 8 ROHS LOW-LEAD  
 9 PACKING STYLE: B: BAG PACKING T: TUBE PACKING R: REEL PACKING

3

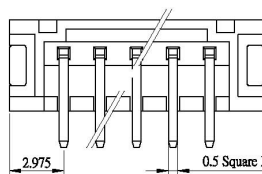
**W2103-XXPSAXXWR**  
**2.0mm WAFER SMT TYPE 180°(TOP ENTRY)**



ORDER INFORMATION

W2103-XX P S A X X W R  
 1 CONTACT NO. 02 - 16 (SINGLE ROW) 05(2x) - 12(2x16) (DUAL ROW) 2 CONTACT TYPE: P: NON DISTRIBUTION 3 ROW TYPE: S: SINGLE ROW 4 FUNCTION: A: S.M.T. STRAIGHT (SINGLE ROW)  
 5 CONTACT PLATING: T: TIN 6: SELECTIVE GOLD 7 OTHERS: W: WHITE 8 ROHS LOW-LEAD  
 9 PACKING STYLE: B: BAG PACKING T: TUBE PACKING R: REEL PACKING

XX	A	B	C
2	2.00	8.00	4.80
3	4.00	10.00	6.80
4	6.00	12.00	8.80
5	8.00	14.00	10.80
6	10.00	16.00	12.80
7	12.00	18.00	14.80
8	14.00	20.00	16.80
9	16.00	22.00	18.80
10	18.00	24.00	20.80
11	20.00	26.00	22.80
12	22.00	28.00	24.80
13	24.00	30.00	26.80
14	26.00	32.00	28.80
15	28.00	34.00	30.80
16	30.00	36.00	32.80

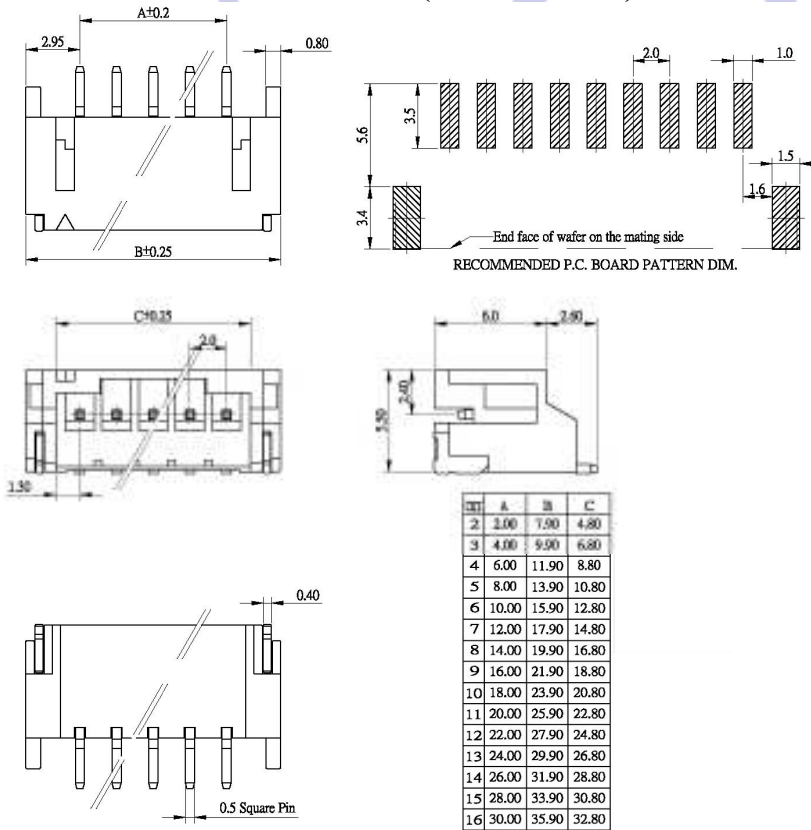


SPECIFICATIONS

**Electrical**  
Voltage Rating: 100V AC, DC  
Current Rating: 2A AC, DC  
Withstand Voltage: 800V AC/min  
Insulation Resistance: 1000MΩ/min  
Temperature Range: -25°C ~ +85°C

**Material**  
Wafer: High Temperature Plastic Nylon 46 UL94V-0  
Pin: High Strength Brass With Tin Over Nickel Plated  
Applicable PC Board Thickness: 0.8 ~ 1.6mm  
Contact Resistance: Initial Value / 10mΩ max.

**4**  
**W2103-XXPSBXXWR**  
**2.0mm WAFER SMT TYPE 90° (SIDE ENTRY)**



**SPECIFICATIONS**

**Electrical**  
 Voltage Rating: 100V AC, DC  
 Current Rating: 2A AC, DC  
 Withstand Voltage: 800V AC/min  
 Insulation Resistance: 1000m Ω/min  
 Temperature Range: -25°C ~ +85°C

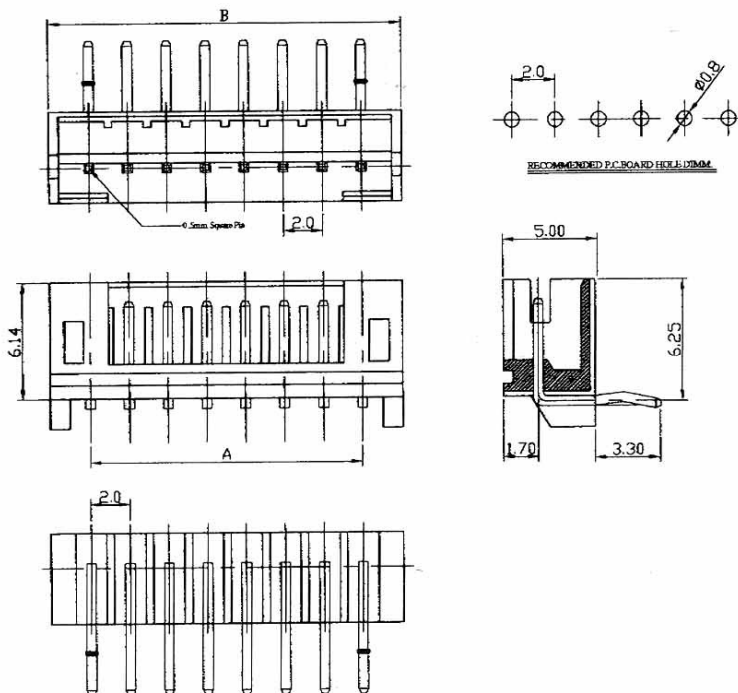
**Material**  
 Wafer: High Temperature Plastic Nylon 46 UL94V-0  
 Pin: High Strength Brass With Tin Over Nickel Plated  
 Applicable PC Board Thickness: 0.8 ~ 1.6mm  
 Contact Resistance: Initial Value / 10m Ω max.  
 After environmental testing: 20m Ω max.

**ORDER INFORMATION**

W2103-XX P B B X X W R

- |                           |                     |
|---------------------------|---------------------|
| 1 CONTACTING:             | 2 CONTACT PLATING:  |
| 02 - 18 (SINGLE ROW)      | T: TIN              |
| 06(X) - 30(2X) (DUAL ROW) | S: SELECTIVE SOLDER |
| 3 CONTACT TYPE:           | G: GOLD FLASH       |
| P: NON DISTRIBUTION       | E: PACKING STYLE:   |
| 3 ROW TYPE:               | B: BAG PACKING      |
| S: SINGLE ROW             | T: TUBE PACKING     |
| 4: FUNCTION:              | R: REEL PACKING     |
| B: SHEET: RIGHT ANGLE     | T: OTHERS:          |
| (SINGLE ROW)              | W: WHITE            |
|                           | 8: ROHS LOW-LEAD    |

**5**  
**W2103-XXPSRXBWR**  
**2.0mm WAFER SINGLE ROW 90°**



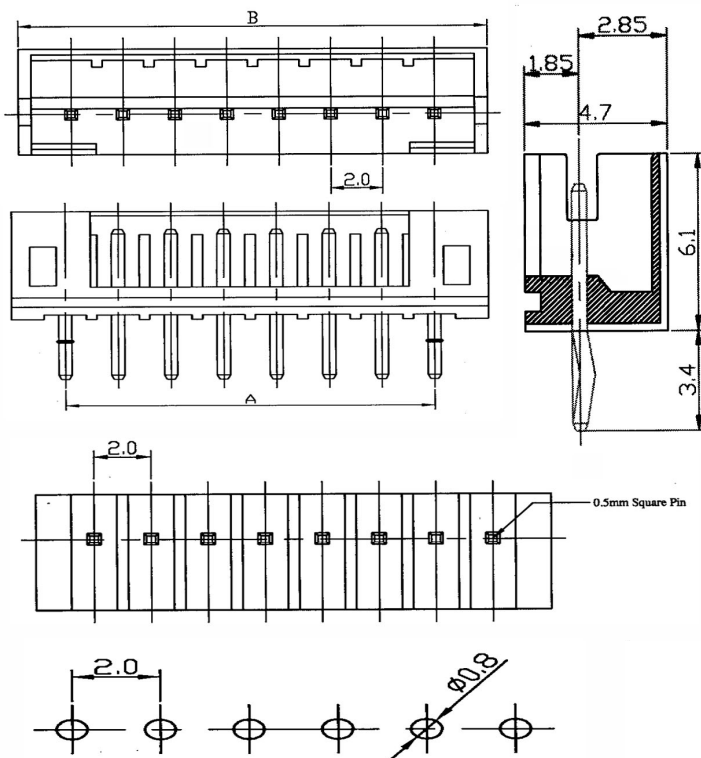
**Specifications**

**Electrical**  
 Voltage Rating: 100V(AC)  
 Current Rating: 2A  
 Contact Resistance: 20m Ω max.  
 Dielectric Withstanding Voltage: 800V AC/1min.  
 Insulation Resistance: 1000M Ω min.

**Material**  
 Circuits: 2-16  
 Insulator: Nylon 66 UL 94V-0  
 Color: White or Natural  
 Contact: Brass 0.50mm(0.20") Square Wire Pins  
 Plating: Tin or Gold Plated  
 Temperature Range: -25°C ~ +85°C  
 Applicable PC Board Thickness: 0.8 to 1.6mm

Poles	Dimension mm (in.)		Note.
	A	B	
2	2.0(0.079)	6.04(0.237)	
3	4.0(0.157)	8.04(0.316)	
4	6.0(0.236)	10.04(0.395)	
5	8.0(0.315)	12.04(0.473)	
6	10.0(0.394)	14.0(0.475)	
7	12.0(0.472)	16.0(0.631)	
8	14.0(0.551)	18.0(0.711)	
9	16.0(0.630)	20.0(0.790)	
10	18.0(0.709)	22.0(0.870)	
11	20.0(0.787)	24.0(0.949)	
12	22.0(0.886)	26.1(1.027)	
13	24.0(0.945)	28.1(1.106)	
14	26.0(1.024)	30.1(1.205)	
15	28.0(1.102)	32.1(1.283)	
16	30.0(1.181)	34.1(1.363)	

6

**W2103-XXPSSXXWR**  
**2.0mm WAFER 180° TYPE XXP**


RECOMMENDED P.C. BOARD HOLE DIMM.

**Specifications**
**Electrical**

Voltage Rating: 100V(AC)

Current Rating: 2A

Contact Resistance: 20mΩ max.

Dielectric Withstanding Voltage: 800V AC/1min.

Insulation Resistance: 1000mΩ min.

**Material**

Circuits: 2~16

Insulator: Nylon 66 UL 94V-0

Color: White or Natural

Contact: Brass 0.50mm(0.20") Square Pin

Plating: Tin or Gold Plated

Temperature Range: -25° C~+85° C

Applicable PC Board Thickness: 0.8 to 1.6mm

Poles	Dimension mm (in.)	
	A	B
2	2.0(0.079)	6.1(0.240)
3	4.0(0.157)	8.1(0.318)
4	6.0(0.236)	10.1(0.397)
5	8.0(0.315)	12.1(0.476)
6	10.0(0.394)	14.1(0.555)
7	12.0(0.472)	16.1(0.634)
8	14.0(0.551)	18.1(0.713)
9	16.0(0.630)	20.1(0.791)
10	18.0(0.709)	22.1(0.870)
11	20.0(0.787)	24.1(0.949)
12	22.0(0.886)	26.1(1.028)
13	24.0(0.945)	28.1(1.106)
14	26.0(1.024)	30.1(1.185)
15	28.0(1.102)	32.1(1.263)
16	30.0(1.181)	34.1(1.343)

ELECTRONIC  
COMPONENTS