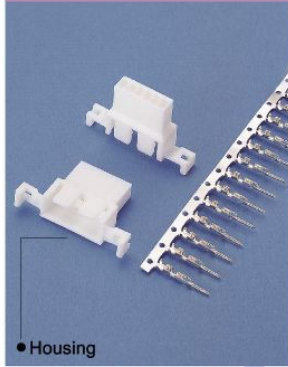


H2506 Series 2.5mm Crimp Female Housing



H **2506** — **06** **P** **R** **W** **0** **0** **0**

1 2 3 4 5 6 7 8 9

1. PRODUCTS:
H:Housing

2. SERIES NO.:
2506

3. CONTACT NO.:
02-12

4. CONTACT TYPE:
P:Non Distribution

5. BODY OPTION:
N:Without Mounting Ears
R:Right Angle Ears

6. INSULATOR COLOR:
W:White

7. FILL IT WITH "0"

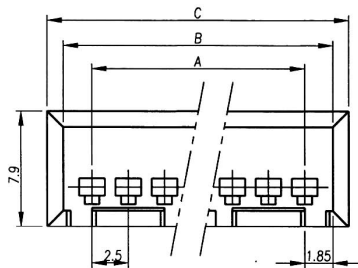
8. FILL IT WITH "0"

9. FILL IT WITH "0"

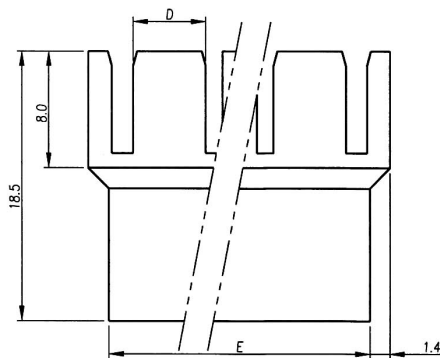
1

H2506-XXPNW000R

2.5mm HOUSING(FEMALE) WITHOUT MOUNTING EARS 1X??P

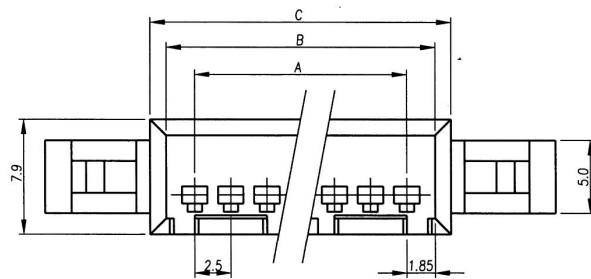


PART NO.	Dim. A	Dim. B	Dim. C	Dim. D	Dim. E
02	2.5	6.2	8.6	2.5	5.8
03	5.0	8.7	11.1	5.0	8.3
04	7.5	11.2	13.6	7.5	10.8
05	10.0	13.7	16.1	3.7	13.3
06	12.5	16.2	18.6	5.0	15.8
07	15.0	18.7	21.1	5.0	18.3
08	17.5	21.2	23.6	5.0	20.8
09	20.0	23.7	26.1	5.0	23.3
10	22.5	26.2	28.6	5.0	25.8
11	25.0	28.7	31.1	5.0	28.3
12	27.5	31.2	33.6	5.0	30.8

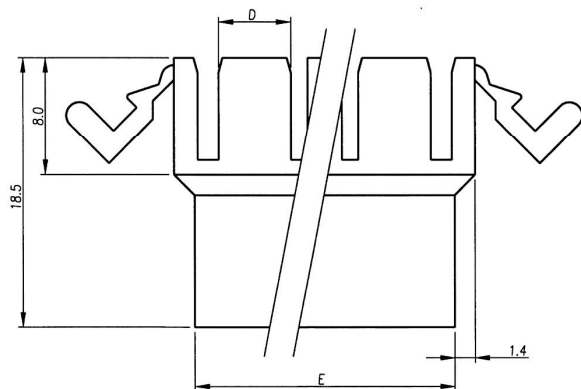


ELECTRONIC
COMPONENTS

2

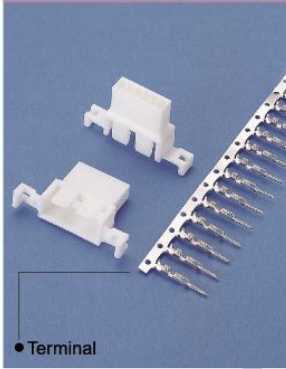
H2506-XXPYW000R**2.5mm HOUSING(FEMALE) WITH MOUNTING EARS 1X??P**

Płm	Dim. A	Dim. B	Dim. C	Dim. D	Dim. E
2	2.5	6.2	8.6	2.5	5.8
3	5.0	8.7	11.1	5.0	8.3
4	7.5	11.2	13.6	7.5	10.8
5	10.0	13.7	16.1	3.7	13.3
6	12.5	16.2	18.6	5.0	15.8
7	15.0	18.7	21.1	5.0	18.3
8	17.5	21.2	23.6	5.0	20.8
9	20.0	23.7	26.1	5.0	23.3
10	22.5	26.2	28.6	5.0	25.8
11	25.0	28.7	31.1	5.0	28.3
12	27.5	31.2	33.6	5.0	30.8



ELECTRONIC
COMPONENTS

T2506 Series 2.5mm Crimp Male Contacts

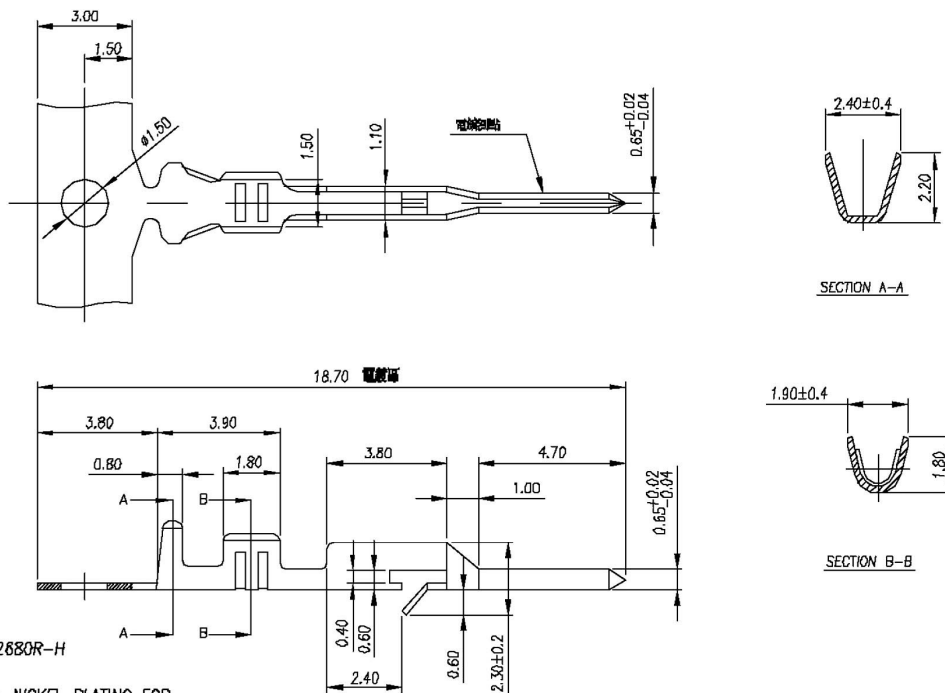


T	2506	—	T	B	J	0	0	0	0	0
1	2		3	4	5	6	7	8	9	10

- | | | |
|---|--|----------------------|
| 1. PRODUCTS:
T: Terminal | 4. MATERIAL:
B: Brass
P: Phosphor Bronze | 7. FILL IT WITH "0" |
| 2. SERIES NO.:
2506 | 5. WIRE OPTION:
J: Suitable For 22-28 Awg | 8. FILL IT WITH "0" |
| 3. CONTACT NO.:
T: Tin
S: Selective Gold
G: Gold Flash | 6. FILL IT WITH "0" | 9. FILL IT WITH "0" |
| | | 10. FILL IT WITH "0" |

T2506-TBJ0000R

MX 2.54mm MALE TERMINAL (BROZNE) FOR 22~28AWG



NOTES:

1. MATERIAL: C2680R-H
2. PLATING:
UNDERPLATING: NICKEL PLATING FOR
ALL 30 μ ~50 μ
- SOLDER TAIL PLATING: TIN-LEAD 90/10
PLATING 100 μ ~200 μ
OR TIN PLATED(LEAD FREE)

ELECTRONIC
COMPONENTS