

C0710 Series Centronic Solder Type (Nickel Shell)



C **0710** — **50** **F** **E** **A** **G** **L** **0**

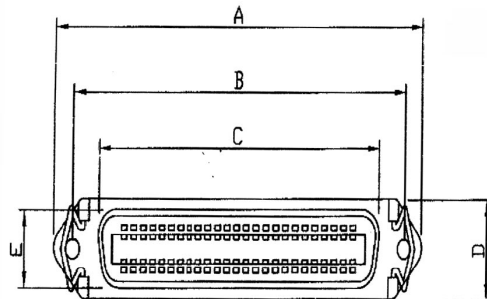
1 2 3 4 5 6 7 8 9

1. PRODUCTS:
C: Connector
2. SERIES NO.:
0710
3. CONTACT NO.:
14, 24, 36, 50
4. CONTACT TYPE:
M: Male
F: Female
5. BODY OPTION:
A: Panel Type W/O Latch
B: Panel Type W/Latch (Female)
C: Molded Type (Male)
D: Male+Metal Cover
E: Female+Metal Cover W/Latch
P: Male+Plastic Cover
6. MOUNTING OPTION:
O: No Option (Molded Type)
A: Through Hole
B: Thread Insert 4-40UNC
- C: Rear Rivet
3.8mm Nut&Fix Screws
7. CONTACT PLATING:
S: Selective Gold
G: Gold Flash
C: Gold 15U"
D: Gold 30U"
8. Insulator Color:
B: Black
L: Blue
9. OTHERS:
Y: W/Mounting Clip Rivet

1

C0710-XXFAAXXYR

CENTRONIC SOLDER TYPE XXF PANEL TYPE W/LATCH NICKEL THROUGH HOLE



ELECTRICAL CHARACTERISTICS:

CONTACT CURRENT RATING: 1 AMPERES.
DIELECTRIC WITHSTANDING VOLTAGE: AC 500V R.M.S.
INSULATION RESISTANCE: 500 MEGOHMS MINIMUM AT DC 500V.
CONTACT RESISTANCE: 30 MILLIOHMS MAXIMUM.
OPERATING TEMPERATURE: -55C TO 105C.

MECHANICAL CHARACTERISTICS:

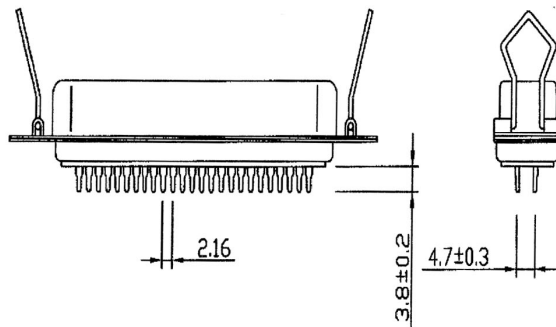
CONTACT INSERTION FORCE: KG MAXIMUM.
CONTACT SEPARATION FORCE: KG MINIMUM.

MATERIALS:

CONTACT: BRASS.
INSULATOR: P.B.T. UL 94-V0 RATED.
SHELL: COLD ROLLED STEEL.

FINISHES:

CONTACTS: GOLD PLATED 3u", 5u", 10u", 15u", 30u".
SHELL: NICKEL PLATED.

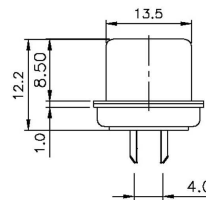
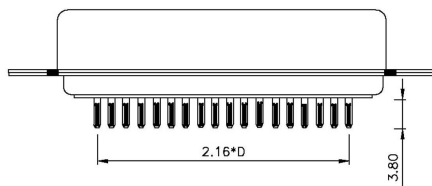
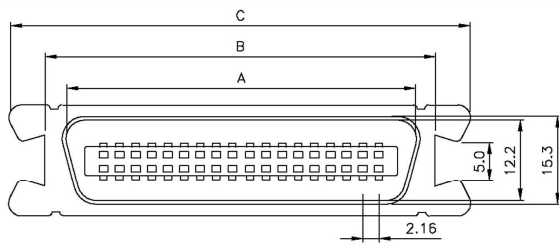


PART NO.	A±0.2	B±0.2	C±0.2	D±0.03	E±0.2
C-14S	43.92	35.99	25.2	12.25	11.9
C-24S	54.71	46.79	36.0	12.25	11.9
C-36S	67.69	59.74	48.9	12.25	11.9
C-50S	82.78	74.85	64.0	12.25	11.9

ELECTRONIC
COMPONENTS

2

C0710-XXMC0SL0R
CENTRONIC MOLDED TYPE XXM W/O LATCH NICKEL SHELL



POSITION	A	B	C	D
14M	25.50	29.40	38.50	6
24M	36.30	40.20	49.30	11
36M	49.30	53.50	62.00	17
50M	64.40	68.30	77.40	24

INSULATOR - P.B.T. +30%GLASS FIBER
 UL 94V-0
 CONTACT - PHOSPHOR BRONZE
 SHELL FINISH - STEEL NICKEL PLATED
 HOOD - STEEL
 PLATING - CONTACT
 1. GOLD FLASH (COMPLETE)
 2. SELECTIVE GOLD OVER NICKEL PLATED
 (CONTACT AREA) TIN OVER NICKEL PLATED (TAIL AREA)
 - SHELL
 NICKEL OVER COPPER PLATED
 - HOOD
 NICKEL OVER COPPER PLATED

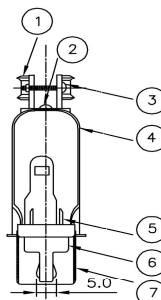
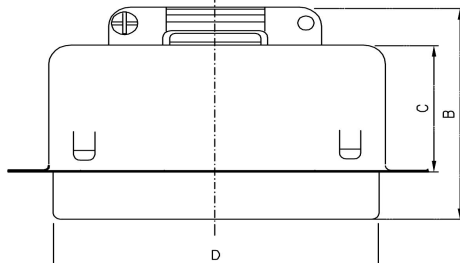
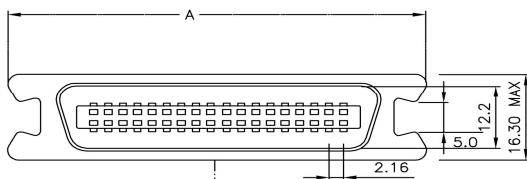
ELECTRICAL CHARACTERISTICS

RATING CURRENT : 5 AMP
 CONTACT RESISTANCE : < 25 MILLIOHM
 INSULATION RESISTANCE : > 1000 MEGOHM AT 500V
 DIELECTRIC VOLTAGE : 1000V AT 1 MINUTE
 OPERATION TEMPERATURE : -55°C TO +105°C

APPLIED TO WAVE SOLDER CAPABLE TO 240°

3

C0710-XXMD0XX0R
CENTRONIC SOLDER TYPE M W/REAR METAL COVER W/O LATCH NICKEL SHELL SIMPLE INSULATOR



SIZE	A±0.15	B±0.15	C±0.15	D±0.15
14M	38.00	31.40	21.60	25.50
24M	49.00	31.20	20.60	36.30
36M	62.00	32.60	22.60	49.30
50M	77.00	35.70	24.90	64.40

NO	PAR NAME
1	CABLE CLAMP
2	RIVET
3	SCREW
4	BACK SHELL
5	TERMINAL
6	INSULATOR
7	FRONT SHELL

MATERIAL & FINISHES

INSULATOR - P.B.T. +30%GLASS FIBER
 UL 94V-0
 CONTACT - PHOSPHOR BRONZE
 SHELL FINISH - STEEL NICKEL PLATED
 HOOD - STEEL
 PLATING - CONTACT
 1. GOLD FLASH (COMPLETE)
 2. SELECTIVE GOLD OVER NICKEL PLATED
 (CONTACT AREA) TIN OVER NICKEL PLATED (TAIL AREA)
 - SHELL
 NICKEL OVER COPPER PLATED
 - HOOD
 NICKEL OVER COPPER PLATED

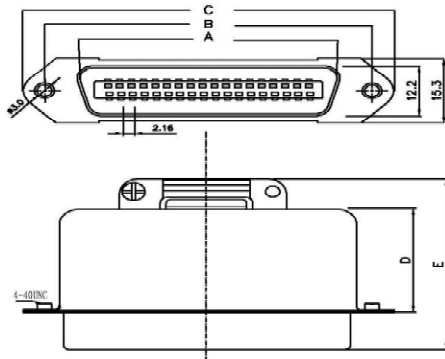
ELECTRICAL CHARACTERISTICS

RATING CURRENT : 5 AMP
 CONTACT RESISTANCE : < 25 MILLIOHM
 INSULATION RESISTANCE : > 1000 MEGOHM AT 500V
 DIELECTRIC VOLTAGE : 1000V AT 1 MINUTE
 OPERATION TEMPERATURE : -55°C TO +105°C

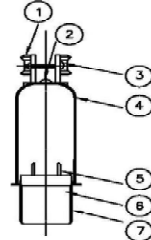
APPLIED TO WAVE SOLDER CAPABLE TO 240°

4

C0710-XXMDBXL0R
CENTRONIC SOLDER TYPE XXP MALE W/REAR METAL COVER THREAD
INSERT 4-40UNC NICKEL SHELL



POSITION	A	B	C
14M	25.50	36.00	43.90
24M	36.30	46.80	54.70
36M	49.30	59.70	67.70
50M	64.40	74.90	82.80



NO	PAR NAME
1	CABLE CLAMP
2	RIVET
3	SCREW
4	BACK SHELL
5	TERMINAL
6	INSULATOR
7	FRONT SHELL



SIZE		D+0.15	D±0.15
14M		22.80	41.90
24M		21.10	39.45
36M		24.10	42.00
50M		26.10	45.00

MATERIAL
& FINISHES

INSULATOR - P.B.T. +30%GLASS FIBER
 UL 94V-0
 CONTACT - PHOSPHOR BRONZE
 SHELL FINISH - STEEL NICKEL PLATED
 HOOD - STEEL
 PLATING - CONTACT
 1. GOLD FLASH (COMPLETE)
 2. SELECTIVE GOLD OVER
 NICKEL PLATED
 (CONTACT AREA) TIN OVER NICKEL
 PLATED (TAIL AREA)
 - SHELL
 NICKEL OVER COPPER PLATED
 - HOOD
 NICKEL OVER COPPER PLATED

ELECTRICAL
CHARACTERISTICS

RATING CURRENT : 5 AMP
 CONTACT RESISTANCE : < 25 MILLIOHM
 INSULATION RESISTANCE:
 > 1000 MEGOHM AT 500V
 DIELECTRIC VOLTAGE :
 1000V AT 1 MINUTE
 OPERATION TEMPERATURE :
 -55°C TO +105°C
 APPLIED TO WAVE SOLDER CAPABLE
 TO 240°

ELECTRONIC
 COMPONENTS