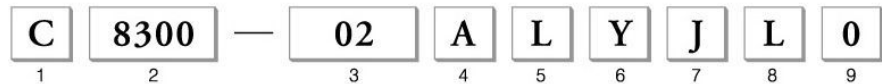
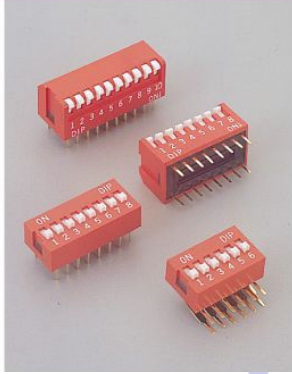
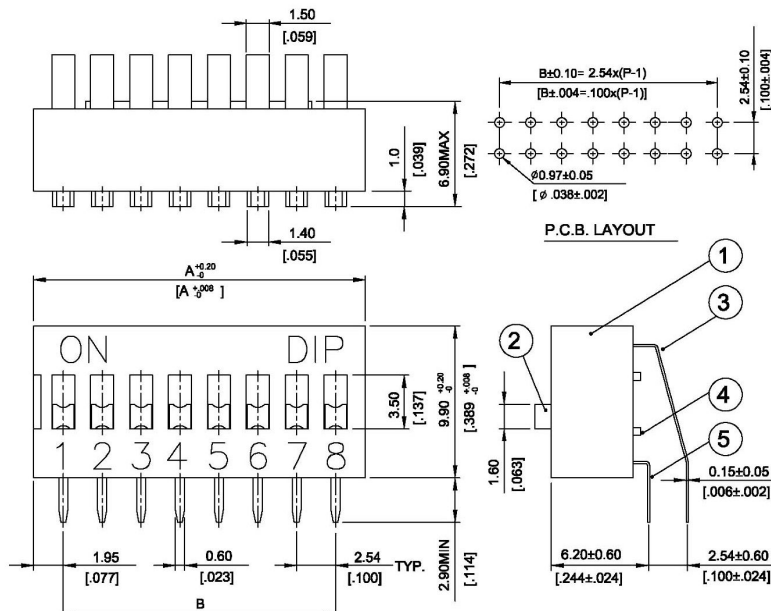


C8300 Series Dip Switch Slide R/A Piano Type

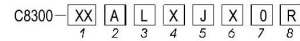


- | | | | |
|---|--|---|---|
| <p>1. PRODUCTS:
C: Connector</p> <p>2. SERIES NO.:
8300</p> <p>3. CONTACT NO.:
02-12</p> <p>4. BODY OPTION:
A: Right Angle Type
P: Piano Type
S: Slide Type</p> | <p>5. KEY OPTION:
S: Short Key
L: Long Key</p> <p>6. TAPE SEALED OPTION:
Y: W/Tape Sealed
N: W/O Tape Sealed</p> | <p>7. CONTACT PLATING:
J: Gold 3u"</p> | <p>8. INSULATOR COLOR:
B: Black
L: Blue
R: Red</p> <p>9. FILL IT WITH "0"</p> |
|---|--|---|---|

1 C8300-XXALXJX0R DIP SWITCH R/A TYPE LONG KEY



ORDER INFORMATION



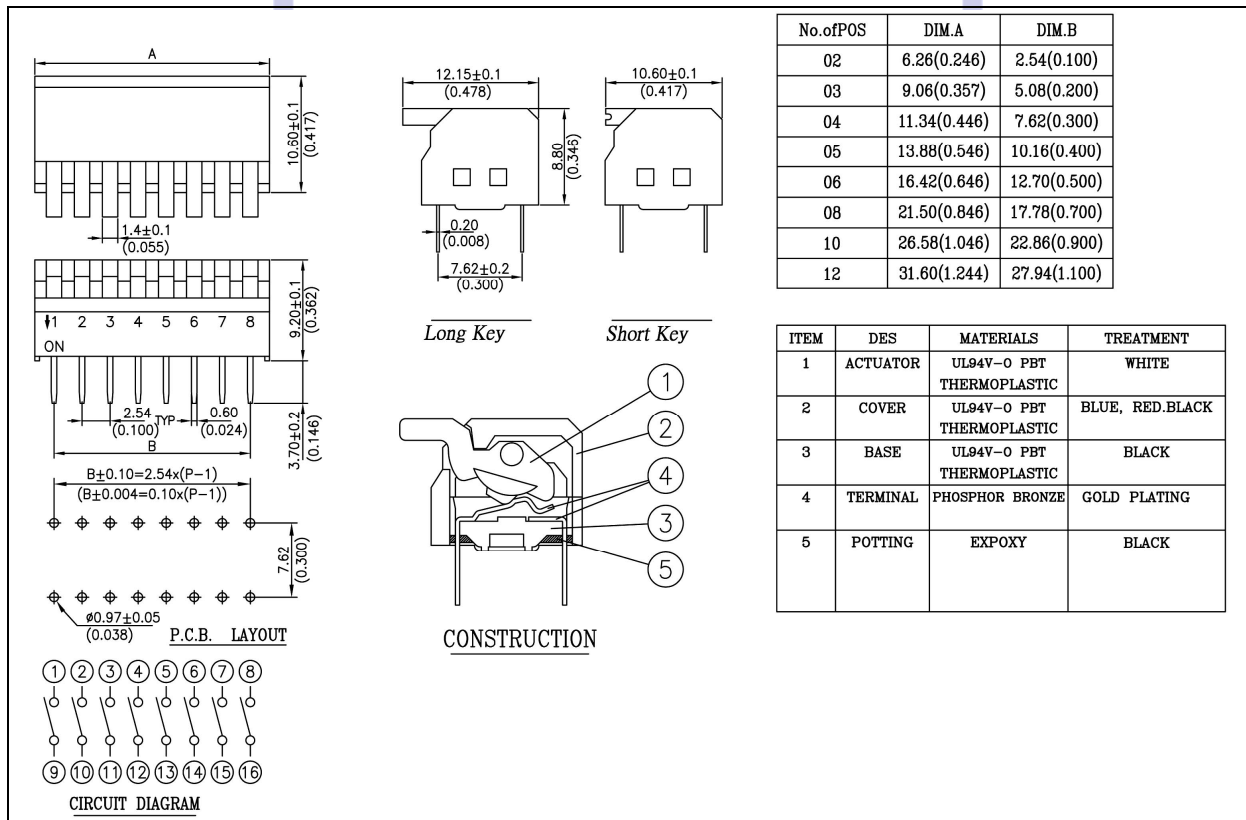
- 1. CONTACT NO:**
02 ~ 12
- 2. TYPE:**
A : RIGHT ANGLE TYPE
- 3. KEY OPTION:**
L : LONG KEY
- 4. TAPE SEALED OPTION:**
Y : WITH TAPE SEALED
N : W / O TAPE SEALED
- 5. CONTACT PLATING:**
J : GOLD 3u"
- 6. INSULATOR COLOR:**
B : BLACK
L : BLUE
R : RED
- 7. OTHERS:**
0 : NO OPTION
- 8. ROHS LOW-LEAD**

	12	31.84[1.254]	27.94[1.100]
10	26.76[1.054]	22.86[900]	
9	24.22[954]	20.32[800]	
8	21.68[854]	17.78[700]	
7	19.14[754]	15.24[600]	
6	16.60[654]	12.70[500]	
5	14.06[554]	10.16[400]	
4	11.52[454]	7.62[300]	
3	8.98[354]	5.08[200]	
2	6.44[254]	2.54[100]	



2 C8300-XXPXNJX0R DIP SWITCH PIANO TYPE W/O TAPE SEALED

ELECTRONIC COMPONENTS



3 C8300-XXSXXJX0R DIP SWITCH SLIDE TYPE XXP

DIMENSION:(UNIT:mm/inches)

