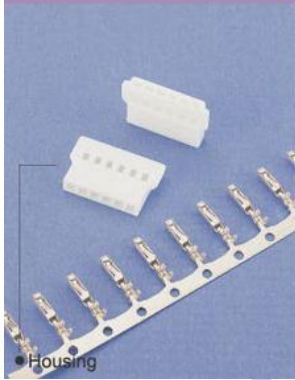


## H2040 Series 2.0mm Crimp Terminal Housing



<b>H</b>	<b>2040</b>	—	<b>02</b>	<b>P</b>	<b>W</b>	<b>1</b>	<b>0</b>	<b>0</b>	<b>0</b>	<b>R</b>
1	2		3	4	5	6	7	8	9	10

1. PRODUCTS:  
H:Housing

2. SERIES NO.:  
2040(Male Housing)

3. CONTACT NO.:  
02-10

4. CONTACT TYPE:  
P:Non Distribution

5. INSULATOR COLOR:  
W:White

6. MATERIAL:  
1:Nylon 66 UL94-V0

7. FILL IT WITH "0"

8. FILL IT WITH "0"

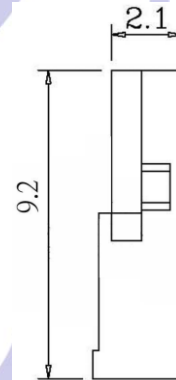
9. FILL IT WITH "0"

10. R:ROHS

### H2040-xxPW100R – MOLEX 2.0mm MALE HOUSING XXP WHITE INSULATOR NYLON66 UL94-V0

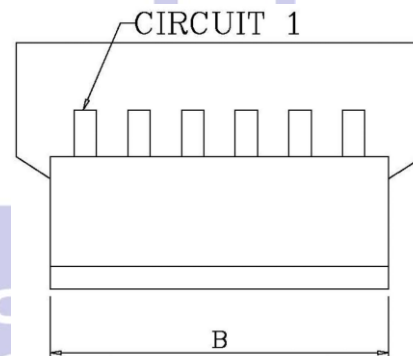
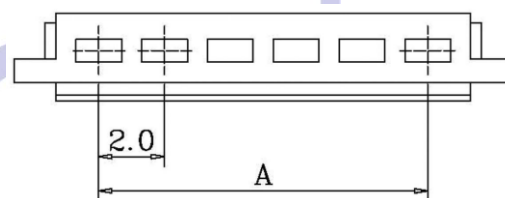
**SPECIFICATION:**  
 PITCH BETWEEN POLES: 2.0mm  
 CURRENT RATING: 2A  
 VOLTAGE RATING: 125V  
 CONTACT RESISTANCE: INITIAL VALUE/10m $\Omega$  max.  
 AFTER ENVIRONMENTAL TESTING/20m $\Omega$  max.  
 INSULATION RESISTANCE: 1000M $\Omega$  (min.)  
 WITHSTAND VOLTAGE: 500V AC/MINUTE  
 TEMPERATURE RANGE: -25°C TO +85°C  
 APPLICABLE WIRE: AWG#24 TO #28

**FEATURES:**  
 AVAILABLE NUMBER OF CIRCUITS 2 TO 10  
 MATERIAL: NYLON 66 UL94V-0  
 ACCEPTS: T2040-TPL00000R CRIMP TERMINAL  
 MATES WITH: H2140-XXPW1000R SERIES HOUSING

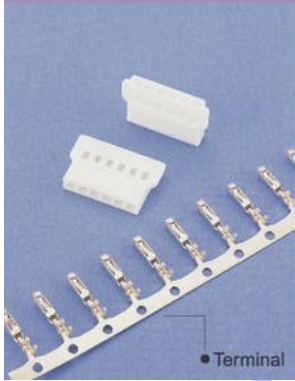


Dimensional and information

Poles	DIM: (mm)	
	A	B
2	2.00	4.60
3	4.00	6.60
4	6.00	8.60
5	8.00	10.60
6	10.00	12.60
7	12.00	14.60
8	14.00	16.60
9	16.00	18.60
10	18.00	20.60



## T2040 Series 2.0mm Crimp Contacts



**T** **2040** — **T** **P** **L** **0** **0** **0** **0** **0** **0** **R**

1 2 3 4 5 6 7 8 9 10 11

- |                                |   |                     |
|--------------------------------|---|---------------------|
| 1. PRODUCTS:<br>T:Terminal     | 4. MATERIAL:<br>P:Phosphor Bronze           | 7. FILL IT WITH"0"  |
| 2. SERIES NO.:<br>2040(Female) | 5. WIRE OPTION:<br>L:Suitable For 24-28 Awg | 8. FILL IT WITH"0"  |
| 3. CONTACT PLATING:<br>T:Tin   | 6. FILL IT WITH"0"                          | 9. FILL IT WITH"0"  |
|                                |   | 10. FILL IT WITH"0" |
|                                |   | 11. R:ROHS          |

### T2040-TPL0000R – MOLEX 2.0mm FEMALE TERMINAL PHOSPHORE BRONZE TIN PLATING SUITABLE FOR 24-28 AWG

#### Specifications & Information:

Thickness	Material	Wire Range	Insulation O.D.	Finish	Qty/reel	Use with
0.2	Phosphor Bronze	AWG #24~28	1.5-1.1mm	Pre. Tin-Plated	10,000PCS	H2040-XXPW1000R

