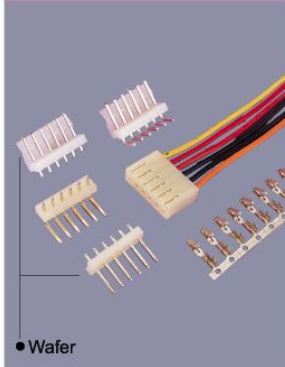


W2400 Series 3.96mm Wafer (Square Pin)



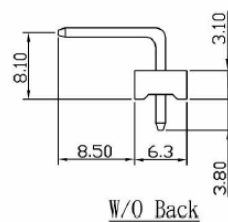
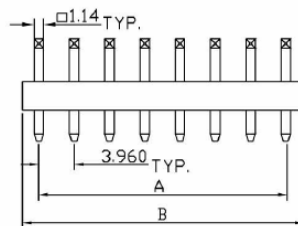
W
2400
—
02
P
S
Y
T
W
0

- | | | |
|---|---|--|
| <p>1. PRODUCTS:
W:Wafer</p> <p>2. SERIES NO.:
2400</p> <p>3. CONTACT NO.:
04-20</p> | <p>4. CONTACT TYPE:
P:Non Distribution</p> <p>5. FUNCTION:
S: Straight
R: Right Angle</p> <p>6. BODY OPTION:
Y: With Back
N: Without Back</p> | <p>7. CONTACT PLATING:
T: Tin
S: Selective Gold
G: Gold Flash</p> <p>8. INSULATOR COLOR:
W: White
B: Black
R: Red
E: Green</p> |
|---|---|--|

(W2401 Series 3.96mm Wafer Round Pin)

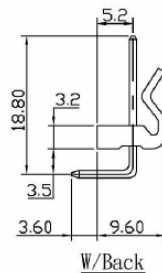
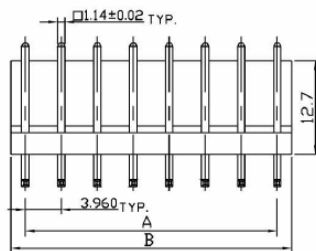
9. FILL IT WITH "0"

1 W2400-XXPRXXW0R 3.96mm WAFER 90°



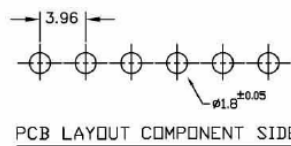
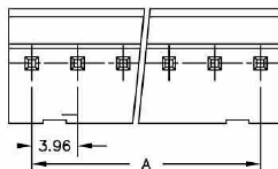
SPECIFICATION

Voltage Rating: 250V AC/DC
 Current Rating: 5A AC/DC
 Temperature Range: -25° C ~ +85° C
 Contact Resistance: 10 Milliohms Max.
 Insulation Resistance: 1,000 Megohms Min.
 Dielectric Withstanding Voltage: 1,500V AC/DC/Minute.
 Material: Nylon 66, UL94V-2
 Color: White
 Pin: Brass, Tin Plated



Poles	Dimension		Poles	Dimension	
	A	B		A	B
2	3.96	8.00	11	39.60	43.90
3	7.92	12.00	12	43.56	47.80
4	11.88	15.90	13	47.52	51.80
5	15.84	20.00	14	51.48	55.70
6	19.80	24.00	15	55.44	59.80
7	23.76	27.90	16	59.40	63.80
8	27.72	31.90	17	63.36	67.70
9	31.68	35.80	18	67.32	71.70
10	35.64	39.90	19	71.28	75.60
			20	75.24	79.80

2 W2400-XXPSYTW0R 3.96mm WAFER 180°



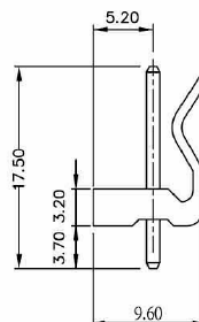
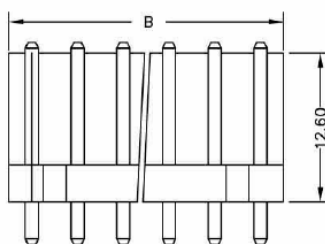
SPECIFICATIONS

Electrical

Current Rating: 5A AC, DC
 Voltage Rating: 250V AC, DC
 Operating Temp.: -25°C ~ +85°C
 Insulation Resistance: 1000MΩ/min.
 Dielectric Withstanding Voltage: 1500V AC/min.
 Contact Resistance: 10mΩ/ max.

Material

Material: Nylon66, UL94V-2



Poles	Dimension mm (in.)	
	A	B
2	3.96	8.00
3	7.92	12.00
4	11.88	15.90
5	15.84	20.00
6	19.80	24.00
7	23.76	27.90
8	27.72	31.70
9	31.68	35.80
10	35.64	39.90
11	39.60	43.90
12	43.56	47.80
13	47.52	51.80
14	51.48	55.70
15	55.44	59.80
16	59.40	63.80
17	63.36	67.70
18	67.32	71.70
19	71.28	75.60
20	75.24	79.80