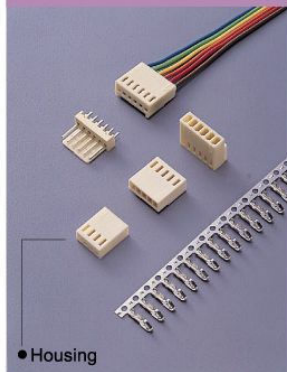
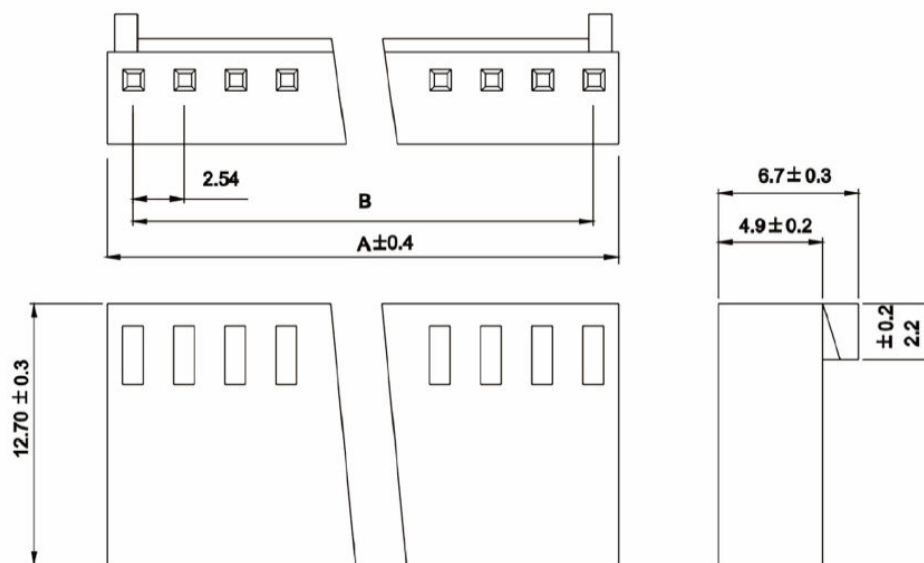


H2510 Series 2.54mm Crimp Terminal Housing



H	2510	—	02	P	Y	C	0	0	0
1	2		3	4	5	6	7	8	9

- | | | |
|---------------------------|--|---------------------|
| 1. PRODUCTS:
H:Housing | 4. CONTACT TYPE:
P:Non Distribution | 7. FILL IT WITH "0" |
| 2. SERIES NO.:
2510 | 5. BODY OPTION:
Y:With Locking Rib
N:Without Locking Rib
S:With Short Locking Rib | 8. FILL IT WITH "0" |
| 3. CONTACT NO.:
02-20 | 6. INSULATOR COLOR:
W:White (UL94-V0)
C:Beige (UL94-V2)
Z:White (UL94-V2, Short Locking Rib Only) | 9. FILL IT WITH "0" |

1**H2510-XXPSZ000R****2.54mm HOUSING WITH SHORT LOCKING RIBS MATERIAL UL94-V2**

* MAT'L: NYLON 66 UL94V-2

* CURRENT RATING: 3AAC,DC

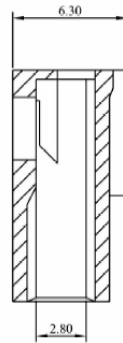
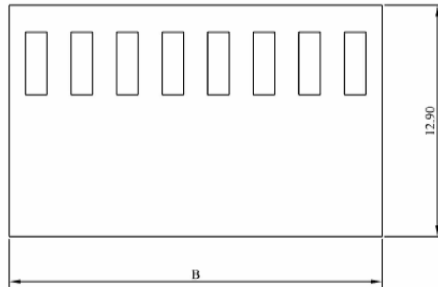
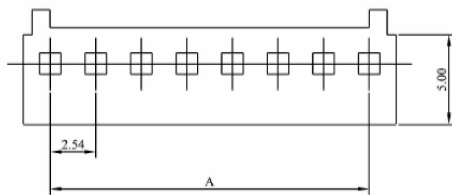
* VOLTAGE RATING: 250V AC,DC

ELECTRONIC
COMPONENTS

2**H2510-XXPYC000R****2.54mm HOUSING NON DISTRIBUTION WITH LOCKING RIB UL94-V2**

Specifications

Current Rating: 3A AC, DC
 Voltage Rating: 250 AC Maximum
 Operating Temp: -25°C ~ + 85°C
 Contact Resistance: 20MΩ Max
 Insulation Resistance: 1000MΩ Min
 Terminal Material: Brass/ Tin-plated/ Gold-plated
 Material: Nylon 66, UL94V-2

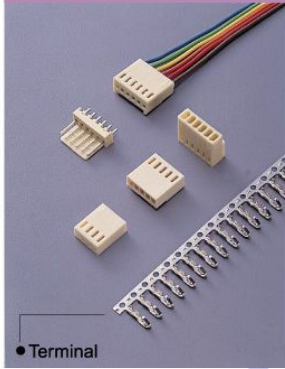


Poles	Dimension mm (in.)	
	A	B
2	2.54 (0.100)	5.64 (0.222)
3	5.08 (0.200)	8.16 (0.321)
4	7.62 (0.300)	10.72 (0.422)
5	10.16 (0.400)	13.30 (0.524)
6	12.70 (0.500)	15.78 (0.621)
7	15.24 (0.600)	18.40 (0.724)
8	17.78 (0.700)	20.80 (0.819)
9	20.32 (0.800)	23.50 (0.925)
10	22.86 (0.900)	26.00 (1.024)
11	25.40 (1.000)	28.50 (1.122)
12	27.94 (1.100)	31.00 (1.220)
13	30.48 (1.200)	33.50 (1.319)
14	32.02 (1.300)	36.00 (1.417)
15	35.56 (1.400)	38.50 (1.516)
16	38.10 (1.500)	41.20 (1.622)
17	40.64 (1.600)	43.60 (1.717)
18	43.18 (1.700)	46.32 (1.824)
19	45.72 (1.800)	48.80 (1.921)
20	48.26 (1.900)	51.34 (2.021)

RoHS Compliant

ELECTRONIC
COMPONENTS

T2510 Series 2.54mm Crimp Contacts

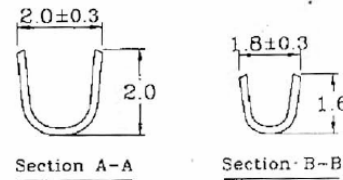
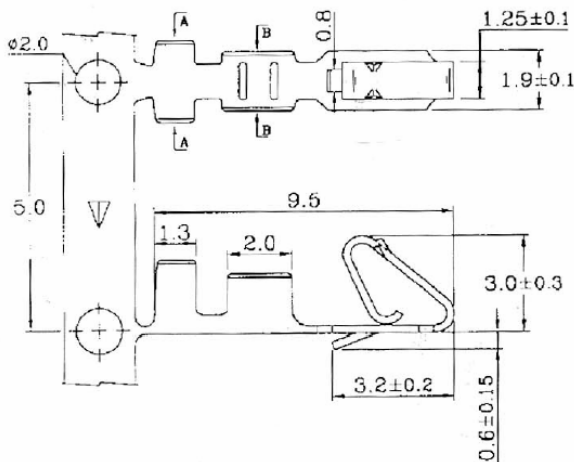


T **2510** — **T** **B** **J** **0** **0** **0** **0** **0**

1 2 3 4 5 6 7 8 9 10

- | | | |
|---|---|--|
| <p>1. PRODUCTS:
T:Terminal</p> <p>2. SERIES NO.:
2510</p> <p>3. CONTACT PLATING:
T: Tin
S: Selective Gold
G: Gold Flash</p> | <p>4. MATERIAL:
P: Phosphor Bronze
B: Brass</p> <p>5. WIRE OPTION:
J: Suitable For 22-28 Awg</p> <p>6. FILL IT WITH "0"</p> | <p>7. FILL IT WITH "0"</p> <p>8. FILL IT WITH "0"</p> <p>9. FILL IT WITH "0"</p> <p>10. FILL IT WITH "0"</p> |
|---|---|--|

1
T2510-TBJ0000R
MX 2.54mm TERMINAL FOR 22~30AWG



Specifications & Ordering Information

THICKNESS	MATERIAL	WIRE RANGE	INSULATION O.D.	FINISH	QTY/REEL
0.2	BRASS	AWG #22-30	1.6~1.13 mm	PRE-TIN-PLATED	10000 PCS

ELECTRONIC
COMPONENTS