

## C0711 Series Centronic Edge Type (Nickel Shell)



C 0711 — 50 M C 0 S L 0

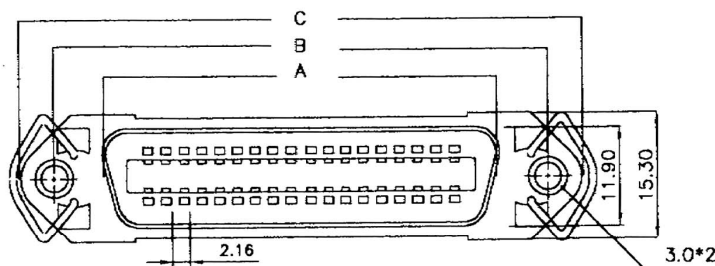
1 2 3 4 5 6 7 8 9

1. PRODUCTS:  
C: Connector
2. SERIES NO.:  
0711
3. CONTACT NO.:  
14, 24, 36, 50
4. CONTACT TYPE:  
M: Male (1.6mm Straddle Spacing)  
F: Female (1.6mm Straddle Spacing)  
A: Male (1.25mm Straddle Spacing)
- B: Female (1.25mm Straddle Spacing)
5. BODY OPTION:  
A: Panel Type W/O Latch  
B: Panel Type W/Latch (Female)  
C: Molded Type (Male)
6. MOUNTING OPTION:  
O: No Option (Molded Type)  
A: Through Hole  
B: Thread Inset 4-40UNC
7. CONTACT PLATING:  
S: Selective Gold  
G: Gold Flash  
C: Gold 150"  
D: Gold 300"
8. Insulator Color:  
B: Black  
L: Blue
9. OTHERS:  
Y: W/Mounting Clip Rivet  
O: Simple Type

1

C0711-XXFBAXLYR

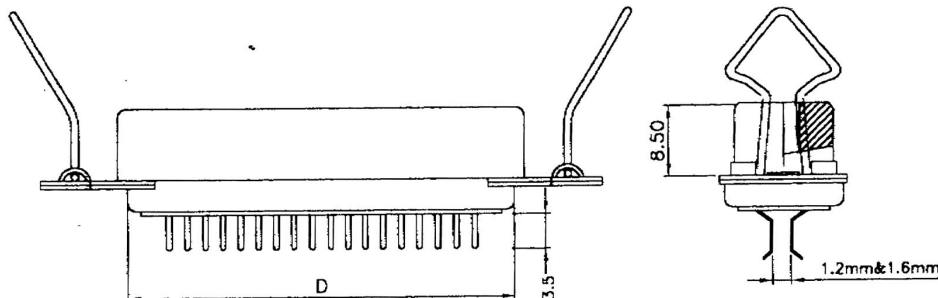
**CENTRONIC EDGE TYPE FEMALE 1.6mm STRADDLE SPACING PANEL TYPE W/LATCH THROUGH HOLE NICKEL SHELL BLUE INSULATOR W/MOUNTING CLIP RIVET**



INSULATOR - P.B.T. +30% GLASS FIBER  
UL 94V-0  
CONTACT - PHOSPHOR BRONZE  
SHELL FINISH - STEEL NICKEL PLATED  
HOOD - STEEL  
PLATING - CONTACT  
1. GOLD FLASH (COMPLETED)  
2. SELECTIVE GOLD OVER NICKEL PLATED  
(CONTACT AREA) TEN OVER NICKEL PLATED (TAIL AREA)  
- SHELL  
NICKEL OVER COPPER PLATED  
- HOOD  
NICKEL OVER COPPER PLATED

## ELECTRICAL CHARACTERISTICS

RATING CURRENT : 5 AMP  
CONTACT RESISTANCE : < 25 MILLIOHM  
INSULATION RESISTANCE : > 1000 MEGOHM AT 500V  
DIELECTRIC VOLTAGE : 3000V AT 1 MINUTE  
OPERATION TEMPERATURE : -25°C TO +105°C  
APPLIED TO WAVE SOLDER CAPABLE TO 240°

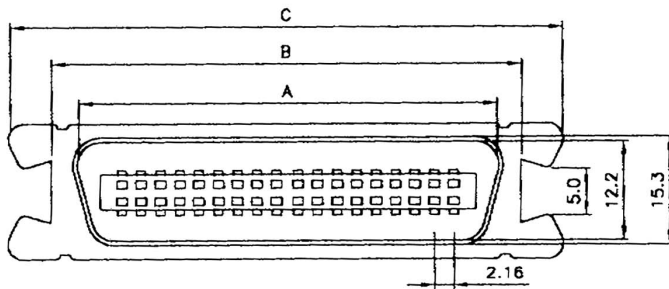


POSITION	A	B	C	D
14F	25.20	36.00	43.90	22.70
24F	36.00	46.80	54.70	33.50
36F	48.90	59.70	67.70	46.60
50F	64.10	74.90	82.80	61.70

ELECTRONIC  
COMPONENTS

2

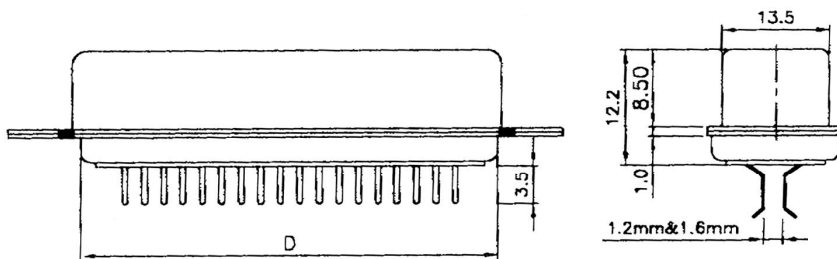
**C0711-XXMC0XL0R**  
**CENTRONIC EDGE TYPE MALE 1.6mm STRADDLE SPACING MOLDING TYPE**  
**NICKEL SHELL**



INSULATOR - P.B.T. +30%GLASS FIBER  
 UL 94V-0  
 CONTACT - PHOSPHOR BRONZE  
 SHELL FINISH - STEEL NICKEL PLATED  
 HOOD - STEEL  
 PLATING - CONTACT  
 1. GOLD FLASH (COMPLETED)  
 2. SELECTIVE GOLD OVER NICKEL PLATED  
 (CONTACT AREA) TIN OVER NICKEL PLATED (TAIL AREA)  
 - SHELL  
 NICKEL OVER COPPER PLATED  
 - HOOD  
 NICKEL OVER COPPER PLATED

**ELECTRICAL CHARACTERISTICS**

RATING CURRENT : 3 AMP  
 CONTACT RESISTANCE : < 25 MILLIOHM  
 INSULATION RESISTANCE : > 1000 MEGOHM AT 500V  
 DIELECTRIC VOLTAGE : 1000V AT 1 MINUTE  
 OPERATION TEMPERATURE : -55°C TO +105°C  
 APPLIED TO WAVE SOLDER CAPABLE TO 240°



RoHS Compliant

POSITION	A	B	C	D
14M	25.50	29.40	38.50	22.70
24M	36.30	40.20	49.30	33.50
36M	49.30	53.50	62.00	46.60
50M	64.40	68.30	77.40	61.90

ELECTRONIC  
 COMPONENTS