

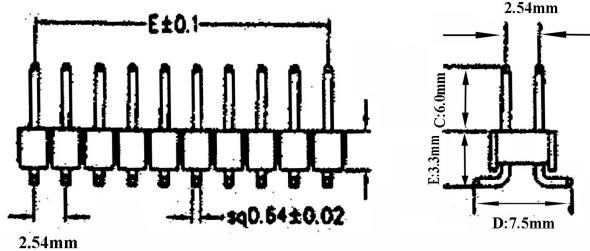
## C2200 Series 2.54mm Pin Header H:2.54mm Dual Row



C	2200	—	80	B	S	G	AS	0
1	2		3	4	5	6	7	8

1. PRODUCTS: C: Connector	5. CONTACT TYPE: S: Straight R: Right Angle D: S.M.T.	7. PIN LENGTH(mm): AS(180°)—C: 6.00mm —D: 3.00mm AR(90°)—C: 6.00mm —D: 3.00mm —E: 1.18mm AT(S.M.T.)—C: 6.00mm —D: 7.50mm —E: 3.30mm	AD(Dual Insulator) —C: 6.0mm —D: 2.5mm —E: 11.5mm —F: 20mm
2. SERIES NO.: 2200	6. CONTACT PLATING: T: Tin S: Selective Gold G: Gold Flash A: Gold 5U" B: Gold 10U" C: Gold 15U" D: Gold 30U"		8. OTHERS: O: No Option T: Tube Packing R: Reel Packing P: PAD+Tube Packing Q: PAD+Reel Packing
3. CONTACT NO.: 04(2x2)—80(2x40)			
4. ROW TYPE: B: Dual Row F: Dual Row/ Dual Insulator K: Dual Row/ Triple Insulator			

### 1 C2200-XXBDXAT0R 2.54mm PIN HEADER DUAL ROW 2XXXXP SMT TYPE (C=6mm D=7.5mm E=3.3mm)



POLES	DIM E	POLES	DIM E
2	2.54	21	50.80
3	5.08	23	55.88
4	7.62	24	58.42
5	10.16	25	60.96
6	12.70	26	63.50
7	15.24	27	66.04
8	17.78	28	68.58
9	20.32	29	71.12
10	22.86	30	73.66
11	25.40	31	76.20
12	27.94	32	78.74
13	30.48	33	81.28
14	33.02	34	83.82
15	35.56	35	86.36
16	38.10	36	88.90
17	40.64	37	91.44
18	43.18	38	93.98
19	45.72	39	96.52
20	48.26	40	99.06

**MATERIAL**

Insulator : NYLON 6T

Contact Pin : Brass

**SPECIFICATION**

Current Rate: 3 AMP

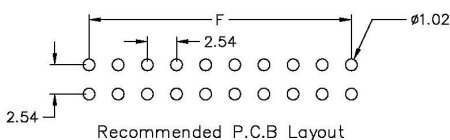
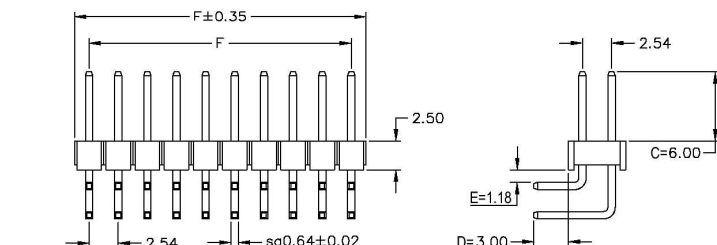
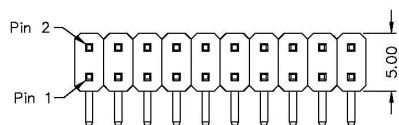
Insulation Resistance: 5000MΩMin. at DC 500V

Contact Resistance : 20mΩMax. at DC 100mA

Operation Temperature: -55°C to +105°C

ELECTRONIC  
COMPONENTS

## 2 C2200-XXBRXAR0R 2.54mm PIN HEADER DUAL ROW RIGHT ANGLE TYPE (C=6mm D=3mm E=1.18mm)

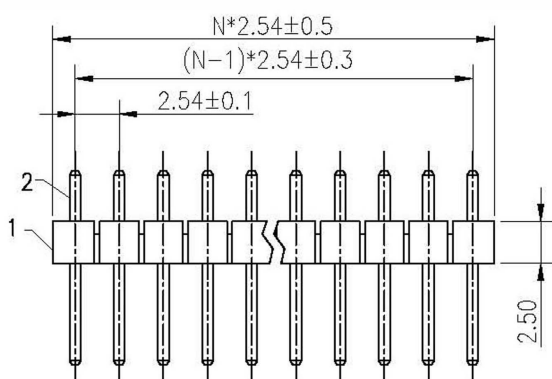


MATERIAL  
Contact Pin : Brass

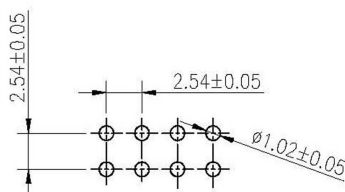
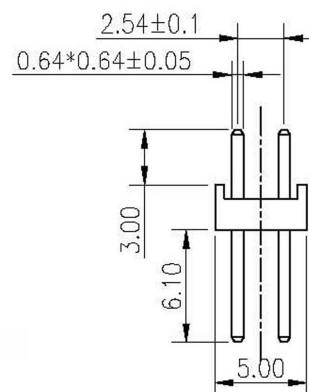
SPECIFICATION  
Current Rate : 3 AMP  
Insulation Resistance : 5000MΩmin. at DC 500V  
Contact Resistance : 20mΩMax. at DC 100mA  
Dielectric Voltage : AC 500V for one minute  
Operation Temperature : -40°C to + 105°C

POLES	DIM F	POLES	DIM F
		21	50.80
2	2.54	22	53.34
3	5.08	23	55.88
4	7.62	24	58.42
5	10.16	25	60.96
6	12.70	26	63.50
7	15.24	27	66.04
8	17.78	28	68.58
9	20.32	29	71.12
10	22.86	30	73.66
11	25.40	31	76.20
12	27.94	32	78.74
13	30.48	33	81.28
14	33.02	34	83.82
15	35.56	35	86.36
16	38.10	36	88.90
17	40.64	37	91.44
18	43.18	38	93.98
19	45.72	39	96.52
20	48.26	40	99.06

## 3 C2200-XXBSXAS0R 2.54mm PIN HEADER SUAL ROW XXP STRAIGHT TYPE (C=6mm D=3mm)



RECOMMEND P.C.BOARD HOLE LAYOUT



### 1. MATERIAL:

- 1.1 INSULATOR: PBT UL94-0
- 1.2 CONTACT: COPPER ALLOY

### 2. CHARACTERISTICS:

- 2.1 CURRENT RATING : 1.5A
- 2.2 CONTACT RESISTANCE: INITIAL: 20mΩ MAX
- 2.3 DIELECTRIC WITHSTANDING VOLTAGE : 500V
- 2.4 INSULATOR RESISTANCE: INITIAL: 1000MΩ MIN

### 3. OPERATING TEMP RANGE: -40 °C TO +105 °C