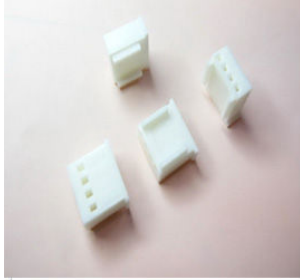


H2507 Series 2.5mm Crimp Male Housing

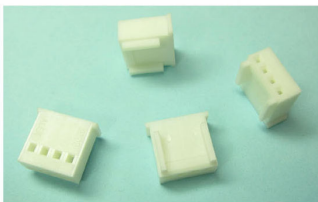


H **2507** — **02** **P** **W** **0** **0** **0** **0**

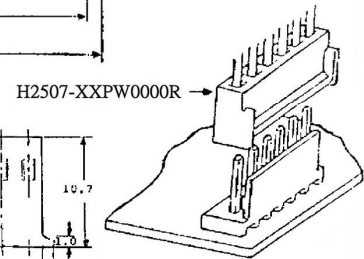
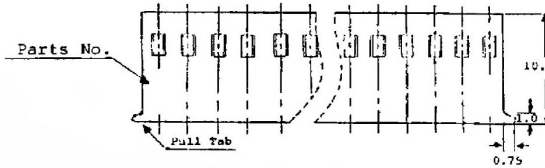
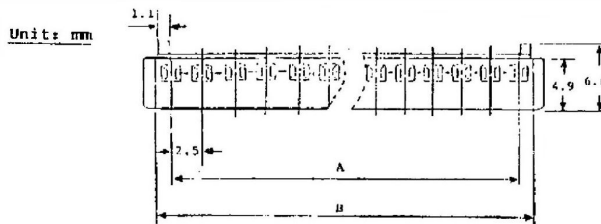
1 2 3 4 5 6 7 8 9

- | | | |
|---------------------------|--|---------------------|
| 1. PRODUCTS:
H:Housing | 4. CONTACT TYPE:
P:Non Distribution | 7. FILL IT WITH "0" |
| 2. SERIES NO.:
2507 | 5. INSULATOR COLOR:
W:White | 8. FILL IT WITH "0" |
| 3. CONTACT NO.:
02-20 | 6. FILL IT WITH "0" | 9. FILL IT WITH "0" |

1 H2507-XXPW0000R MX2.5mm HOUSING(MALE) XXP



- Features:**
- 2 to 20 Circuits
 - Low profile
 - UL 94V-0 Nylon 66
 - Molded pull tab
 - Friction lock



Dimensional and Ordering Information - mm (inch)

Circuits	Dim A	Dim B	Circuits	Dim A	Dim B
2	2.5(.098)	6.0(.236)	12	27.5(1.083)	31.0(1.220)
3	5.0(.197)	8.5(.335)	13	30.0(1.181)	33.5(1.329)
4	7.5(.295)	11.0(.433)	14	32.5(1.280)	36.0(1.417)
5	10.0(.394)	13.5(.531)	15	35.0(1.378)	38.5(1.516)
6	12.5(.492)	16.0(.630)	16	37.5(1.476)	41.0(1.614)
7	15.0(.591)	18.5(.728)	17	40.0(1.575)	43.5(1.723)
8	17.5(.689)	21.0(.827)	18	42.5(1.673)	46.0(1.831)
9	20.0(.787)	23.5(.925)	19	45.0(1.772)	48.5(1.909)
10	22.5(.886)	26.0(1.024)	20	47.5(1.870)	51.0(2.007)
11	25.0(.984)	28.5(1.122)			

Specifications:

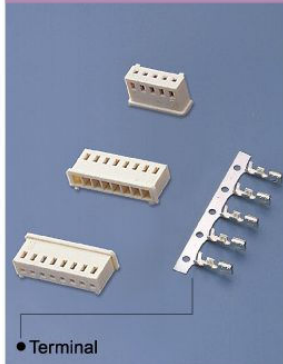
- Voltage Rating: 250V AC,DC
- Current Rating: 3 Amps
- Contact Resistance: 20 milliohms max.
- Dielectric Withstanding Voltage: 1500V AC for 60 seconds.
- Insulation Resistance: 1000 megohms min.
- Ambient Temperature Range: -40°C to 105°C

UNLESS OTHERWISE SPECIFIED

TOLERANCE	mm	inch
.000	±0.08	(mm)
.00	±0.25	(mm)
.0	±0.4	(mm)

ELECTRONIC COMPONENTS

T2507 Series 2.5mm Crimp Female Contacts



T **2507** — **T** **B** **J** **0** **0** **0** **0** **0**

1 2 3 4 5 6 7 8 9 10

- | | | |
|---|--|----------------------|
| 1. PRODUCTS:
T: Terminal | 4. MATERIAL:
B: Brass
P: Phosphor Bronze | 7. FILL IT WITH "0" |
| 2. SERIES NO.:
2507 | 5. WIRE OPTION:
J: Suitable For 22~28 Awg | 8. FILL IT WITH "0" |
| 3. CONTACT PLATING:
T: Tin
S: Selective Gold
G: Gold Flash | 6. FILL IT WITH "0" | 9. FILL IT WITH "0" |
| | | 10. FILL IT WITH "0" |

1 T2507-XXJ00000R MX 2.54mm MALE TERMINAL FOR 22~28AWG

RoHS compliant

Features:

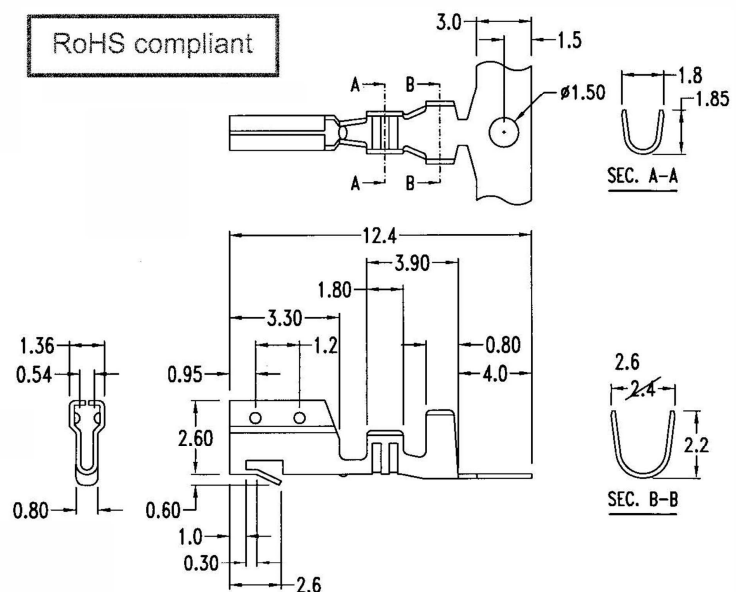
- Finished: Tin-plated
- Wire range: #22 ~ #28 AWG
- Thickness: 0.2mm
- Q'ty: 10000 PCS/Reel

Specification:

- Current rating: 3A
- Voltage rating: 250V AC, DC
- Contact resistance: 20mΩ Max.
- Temperature range: -40°C ~ 105°C

Ordering Information

Part No.	Material
T2507-XBJ00000R	Brass
T2507-XPJ00000R	Phosphor bronze



ELECTRONIC
COMPONENTS