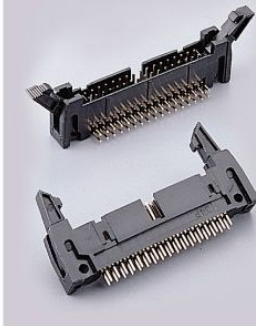


C3000 Series 2.54mm Fully Shrouded Header

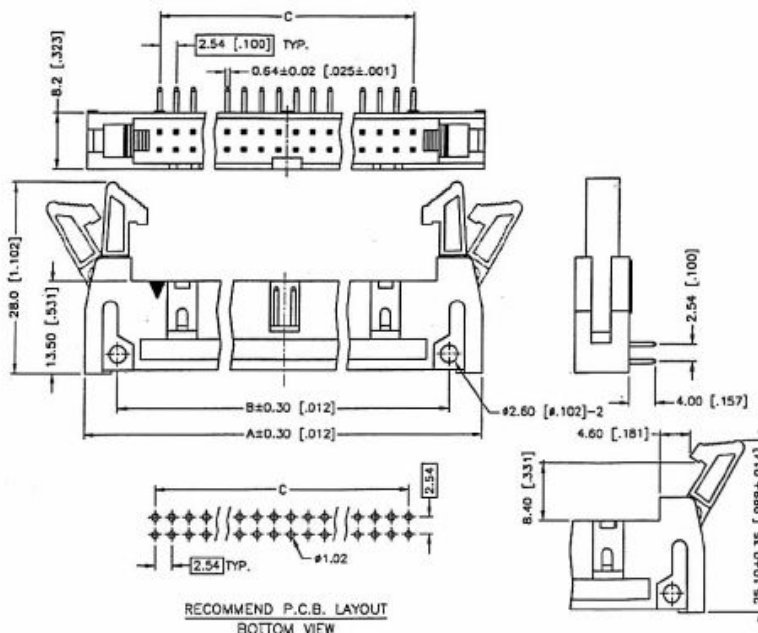


C **3000** — **10** **S** **L** **G** **B** **0** **0**

1 2 3 4 5 6 7 8 9

- | | | |
|--|--|---|
| <p>1. PRODUCTS:
C: Connector
2. SERIES NO.:
3000
3. CONTACT NO.:
10-64
4. CONTACT TYPE:
S: Straight
R: Right Angle</p> | <p>5. BODY OPTION:
N: W/O Latch
L: Long Latch
S: Short Latch
6. CONTACT PLATING:
T: Tin
S: Selective Gold
G: Gold Flash
A: Gold 5U"
B: Gold 10U"
C: Gold 15U"
D: Gold 30U"</p> | <p>7. INSULATOR COLOR:
B: Black
G: Grey
8. FILL IT WITH "0"
9. FILL IT WITH "0"</p> |
|--|--|---|

1

C3000-XXRLXB00R**2.54X2.54mm FULLY SHROUDED HEADER 90° LONG LATCH****MATERIALS**

- HOUSING : P.B.T. (UL 94V-0), BLACK.
- TERMINAL : S.O. 0.64mm BRASS.

SPECIFICATION

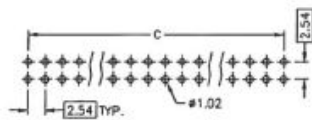
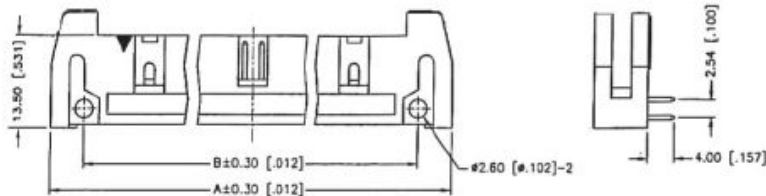
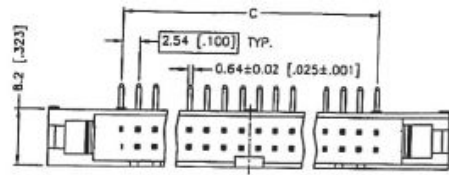
- CURRENT RATING : 3 AMP. MAX.
- DIELECTRIC WITHSTANDING VOLTAGE :
1000V AC R.M.S. FOR ONE MINUTE.
- INSULATION RESISTANCE : 5000M OHMS MIN.
AT 1000V DC.
- OPERATING TEMPERATURE : -55°C TO +105°C.

Number Of Position	DIMENSIONS		
	A	B	C
10	32.00[1.260]	21.84[.860]	10.16[.400]
14	37.08[1.460]	26.92[1.060]	15.24[.600]
16	39.62[1.560]	29.46[1.160]	17.78[.700]
20	44.70[1.760]	34.54[1.360]	22.86[.900]
24	49.78[1.960]	39.62[1.560]	27.94[1.100]
26	52.32[2.060]	42.16[1.660]	30.48[1.200]
30	57.40[2.260]	47.24[1.860]	35.56[1.400]
34	62.48[2.460]	52.32[2.060]	40.64[1.600]
40	70.10[2.760]	59.94[2.360]	48.26[1.900]
50	82.80[3.260]	72.64[2.860]	60.96[2.400]
60	95.50[3.760]	85.34[3.360]	73.66[2.900]
64	100.58[3.960]	90.42[3.560]	78.74[3.100]

ELECTRONIC
COMPONENTS

2

C3000-XXRNXX00R
2.54 SHROUDED HEADER ASSEMBLY 90° W/O LATCH



RECOMMEND P.C.B. LAYOUT
 BOTTOM VIEW

MATERIALS

1. HOUSING : P.B.T. (UL 94V-0), BLACK.
2. TERMINAL : S.Q. 0.64mm BRASS.

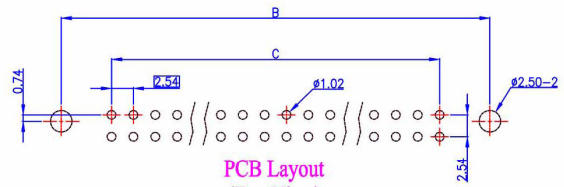
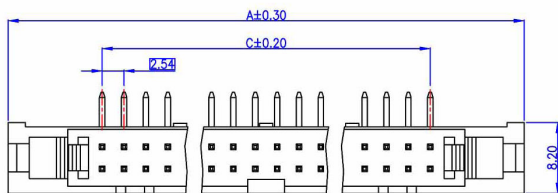
SPECIFICATION

1. CURRENT RATING : 3 AMP. MAX.
2. DIELECTRIC WITHSTANDING VOLTAGE : 1000V AC R.M.S. FOR ONE MINUTE.
3. INSULATION RESISTANCE : 5000M OHMS MIN. AT 1000V DC.
4. OPERATING TEMPERATURE : -55°C TO +105°C.

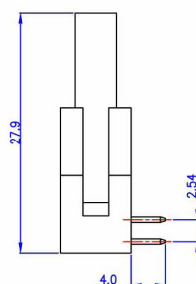
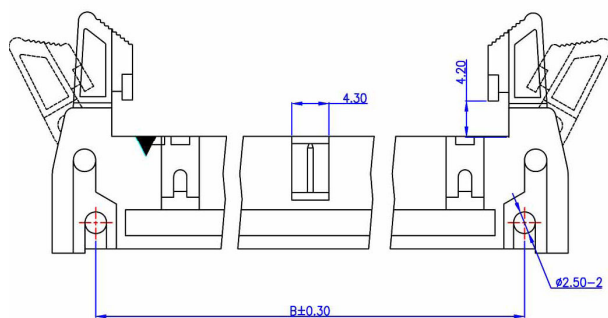
Number Of Position	DIMENSIONS		
	A	B	C
10	32.00[1.260]	21.84[0.860]	10.16[0.400]
14	37.08[1.460]	26.92[1.080]	15.24[0.600]
16	39.62[1.560]	29.46[1.160]	17.78[0.700]
20	44.70[1.780]	34.54[1.360]	22.86[0.900]
24	49.78[1.980]	39.62[1.560]	27.94[1.100]
26	52.32[2.060]	42.16[1.660]	30.48[1.200]
30	57.40[2.260]	47.24[1.860]	35.56[1.400]
34	62.48[2.460]	52.32[2.060]	40.64[1.600]
40	70.10[2.760]	59.94[2.360]	48.26[1.900]
50	82.80[3.260]	72.64[2.860]	60.96[2.400]
60	95.50[3.760]	85.34[3.360]	73.66[2.900]
64	100.58[3.960]	90.42[3.560]	78.74[3.100]

3

C3000-XXRSGB00R
2.54X2.54mm FULLY SHROUDED HEADER 90° SHORT LOCK



PCB Layout
 (Top View)

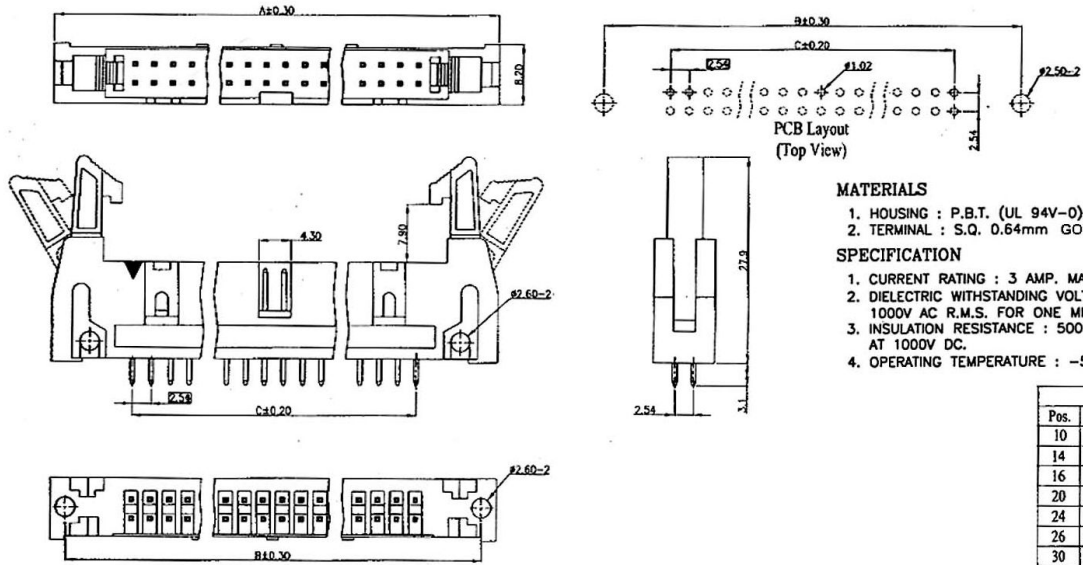


Pos.	Dimensions		
	A	B	C
10	32.00	21.84	10.16
14	37.08	26.92	15.24
16	39.62	29.46	17.78
20	44.70	34.54	22.86
24	49.78	39.62	27.94
26	52.32	42.16	30.48
30	57.40	47.24	35.56
34	62.48	52.32	40.64
40	70.10	59.94	48.26
50	82.80	72.64	60.96

ELECTRONIC COMPONENTS

4

C3000-XXSLXX00R
2.54X2.54mm FULLY SHROUDED HEADER 180° SHORT LOCK



MATERIALS

1. HOUSING : P.B.T. (UL 94V-0), BLACK.
2. TERMINAL : S.Q. 0.64mm GOLD PLATING.

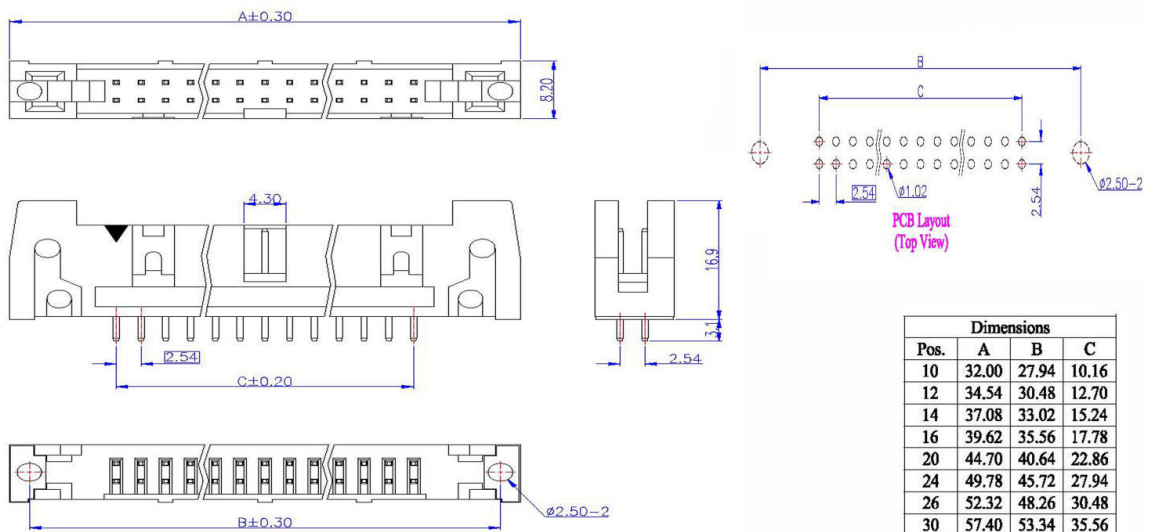
SPECIFICATION

1. CURRENT RATING : 3 AMP. MAX.
2. DIELECTRIC WITHSTANDING VOLTAGE : 1000V AC R.M.S. FOR ONE MINUTE.
3. INSULATION RESISTANCE : 5000M OHMS MIN. AT 1000V DC.
4. OPERATING TEMPERATURE : -55°C TO +105°C.

Dimensions			
Pos.	A	B	C
10	32.00	27.94	10.16
14	37.08	33.02	15.24
16	39.62	35.56	17.78
20	44.70	40.64	22.86
24	49.78	45.72	27.94
26	52.32	48.26	30.48
30	57.40	53.34	35.56
34	62.48	58.42	40.64
40	70.10	66.04	48.26
50	82.80	78.74	60.96

5

C3000-XXSNGB00R
2.54X2.54mm FULLY SHROUDED HEADER 180° XXP NON LOCK



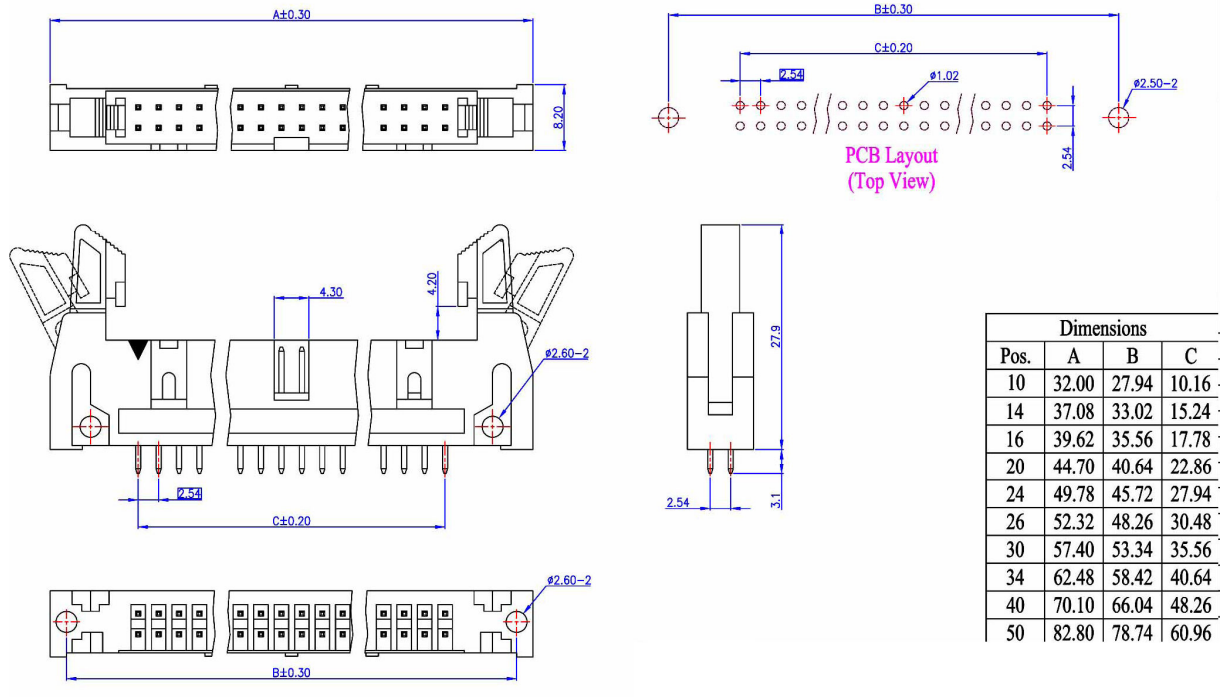
Dimensions			
Pos.	A	B	C
10	32.00	27.94	10.16
12	34.54	30.48	12.70
14	37.08	33.02	15.24
16	39.62	35.56	17.78
20	44.70	40.64	22.86
24	49.78	45.72	27.94
26	52.32	48.26	30.48
30	57.40	53.34	35.56
34	62.48	58.42	40.64
40	70.10	66.04	48.26
50	82.80	78.74	60.96

ELECTRONIC COMPONENTS

6

C3000-XXSSXB00R

2.54X2.54mm FULLY SHROUDED HEADER 180° XXP SHORT LOCK



ELECTRONIC COMPONENTS