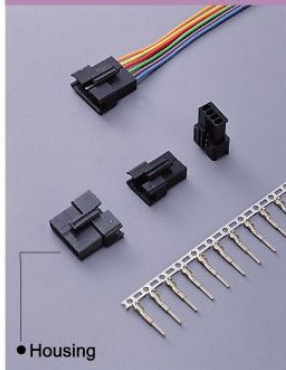


H2325 Series 2.5mm Crimp Terminal Housing



H	2325	—	02	P	B	0	0	0	0
1	2		3	4	5	6	7	8	9

1. PRODUCTS:
H:Housing

2. SERIES NO.:
2325

3. CONTACT NO.:
02-12

4. CONTACT TYPE:
P:Non Distribution

5. INSULATOR COLOR:
B:Black
W:White

6. FILL IT WITH "0"

7. FILL IT WITH "0"

8. FILL IT WITH "0"

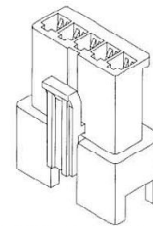
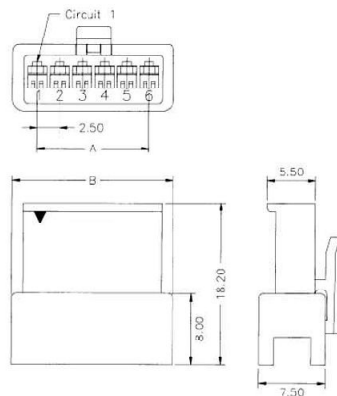
9. FILL IT WITH "0"

H2325-XXPB0000R

2.5mm FEMALE HOUSING W/ LOCKING RIBS BLACK COLOR

Reference Informations:

*Material: Nylon 66,UL94V-0



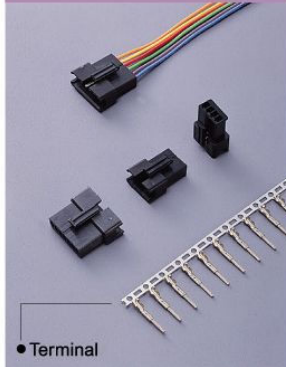
Ordering Information & Dimensions:

Pin NO.	Dimensions	
	A	B
2P	2.50	8.00
3P	5.00	10.50
4P	7.50	13.00
5P	10.00	15.50
6P	12.50	18.00
7P	15.00	20.50
8P	17.50	23.00
9P	20.00	25.50
10P	22.50	28.00
11P	25.00	30.50
12P	27.50	33.00

Unit:mm

ELECTRONIC
COMPONENTS

T2325 Series 2.5mm Crimp Contacts



T	2325	—	T	B	J	0	0	0	0	0
1	2		3	4	5	6	7	8	9	10

1. PRODUCTS:
T: Terminal

2. SERIES NO.:
2325

3. CONTACT PLATING:
T: Tin
S: Selective Gold
G: Gold Flash

4. MATERIAL:
B: Brass

5. WIRE OPTION:
J: Suitable For 22~28 Awg

6. FILL IT WITH "0"

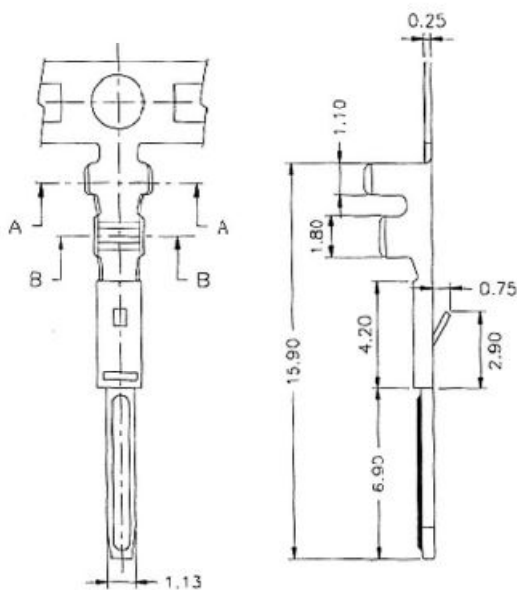
7. FILL IT WITH "0"

8. FILL IT WITH "0"

9. FILL IT WITH "0"

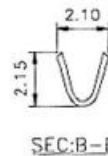
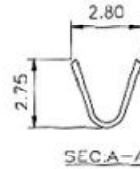
10. FILL IT WITH "0"

T2325-TBJ00000R 2.5mm TERMINAL FOR AWG 22~28



SPECIFICATION

Electric
Current Rating: 2A AC, DC
Voltage Rating: 250V AC, DC
Temperature Range: -25° C ~+85° C
Contact Resistance: 20m ohms max.
Insulation Resistance: 1,000M ohms Min.
Withstanding Voltage: 800V AC/minute.
Wire Range: AWG#22-28
Insulation O.D.: 1.7MM(Max.)
Material: Brass, Tin Plated
Q'ty: 7,000 pcs/Roll



ELECTRONIC
COMPONENTS