

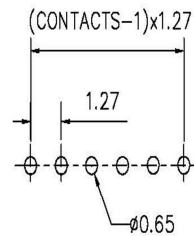
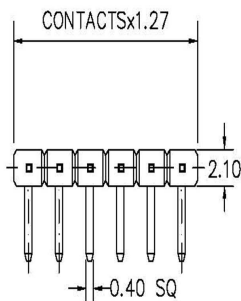
C1174 Series 1.27mm Pin Header H:2.0mm Single Row



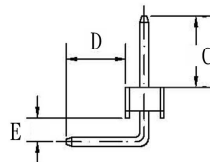
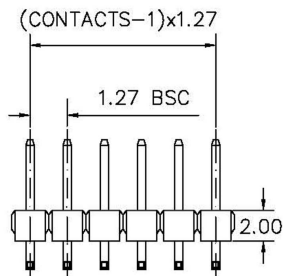
C	1174	—	20	A	S	G	BC	0
1	2		3	4	5	6	7	8

- | | | |
|---|--|---|
| <p>1. PRODUCTS:
C: Connector</p> <p>2. SERIES NO.:
1174</p> <p>3. CONTACT NO.:
02(1x2)-50(1x50)</p> <p>4. ROW TYPE:
A: Single Row
E: Single Row/
Dual Insulator</p> | <p>5. CONTACT TYPE:
S: Straight
R: Right Angle</p> <p>6. CONTACT PLATING:
T: Tin
S: Selective Gold
G: Gold Flash</p> | <p>7. PIN LENGTH(mm):
BC(180°)-C: 1.9mm
-D: 1.9mm</p> <p>8. FILL IT WITH*0"</p> |
|---|--|---|

1 C1174-XXARXXX0R 1.27mm PIN HEADER SINGLE ROW 1XXXP 90° TYPE H:2mm



RECOMMENDED P.C.B LAYOUT



C: _____ mm D: _____ mm E: _____ mm

MATERIAL
HOUSING : THERMOPLASTIC UL94V-0
CONTACT : COPPER ALLOYS

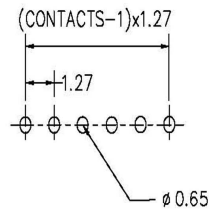
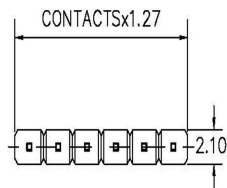
SPECIFICATION
CURRENT: 1A
OPERATING TEMPERATURE: -55°C TO +105°C
CONTACT RESISTANCE : 20 MILLIOHMS MAX
INSULATION RESISTANCE : 5000 MEGAOHMS MIN
DIELECTRIC STRENGTH : 1000 VAC MIN
DURABILITY : 100 CYCLES
RETENTION FOREC : 700g MIN

FINISH
CONTACT PLATING SEE ORDER INFORMATION

CONTACTS	1X21
1X2	1X22
1X3	1X23
1X4	1X24
1X5	1X25
1X6	1X26
1X7	1X27
1X8	1X28
1X9	1X29
1X10	1X30
1X11	1X31
1X12	1X32
1X13	1X33
1X14	1X34
1X15	1X35
1X16	1X36
1X17	1X37
1X18	1X38
1X19	1X39
1X20	1X40

ELECTRONIC COMPONENTS

2 C1174-XXASXXX0R 1.27mm PIN HEADER SINGLE ROW 1XXXP 180° TYPE H:2mm

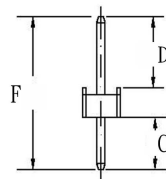
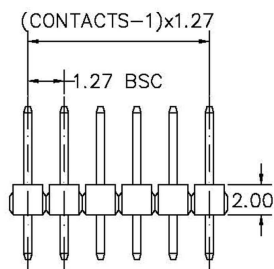


MATERIAL
HOUSING : THERMOPLASTIC UL94V-0
CONTACT : COPPER ALLOYS

SPECIFICATION
CURRENT: 1A
OPERATING TEMPERATURE: -55°C TO +105°C
CONTACT RESISTANCE : 20 MILLIOHMS MAX
INSULATION RESISTANCE : 5000 MEGAOHMS MIN
DIELECTRIC STRENGTH : 1000 VAC MIN
DURABILITY : 100 CYCLES
RETENTION FORCE : 700g MIN

FINISH
CONTACT PLATING SEE ORDER INFORMATION

RECOMMENDED P.C.B LAYOUT



CONTACTS	1X21
1X2	1X22
1X3	1X23
1X4	1X24
1X5	1X25
1X6	1X26
1X7	1X27
1X8	1X28
1X9	1X29
1X10	1X30
1X11	1X31
1X12	1X32
1X13	1X33
1X14	1X34
1X15	1X35
1X16	1X36
1X17	1X37
1X18	1X38
1X19	1X39
1X20	1X40

F : _____ mm D : _____ mm C : _____ mm

ELECTRONIC
COMPONENTS