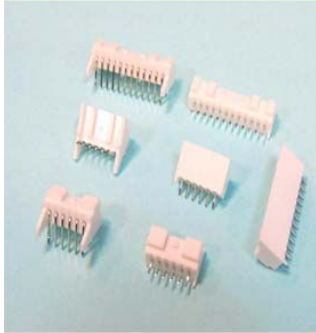


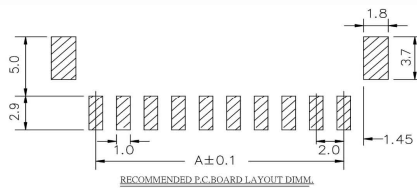
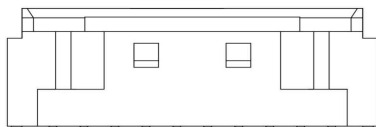
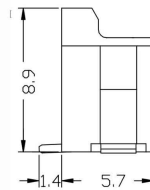
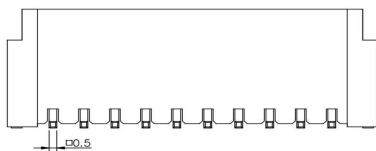
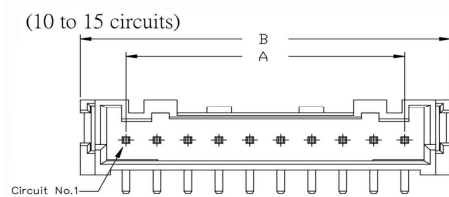
W2112 Series 2.0mm Wafer



W	2112	—	02	P	S	T	W	B	0
1	2		3	4	5	6	7	8	9

- | | | |
|--|---|--|
| <p>1. PRODUCTS:
W:Wafer</p> <p>2. SERIES NO.:
2112</p> <p>3. CONTACT NO.:
02~15</p> <p>4. CONTACT TYPE:
P:Non Distribution</p> | <p>5. FUNCTION:
S: Straight
R: Right Angle
B: S.M.T Right Angle</p> <p>6. CONTACT PLATING:
T: Tin
G: Gold Flash</p> | <p>7. INSULATOR COLOR:
W: White</p> <p>8. PACKING STYLE:
B: Bag Packing
R: Reel Packing (For S.M.T 90° Only)
T: Tube Packing (For S.M.T 90° Only)</p> <p>9. FILL IT WITH "0"</p> |
|--|---|--|

1 W2112-XXPATWX0R 2.0mm WAFER 1X??P SMT STRAIGHT TYPE TIN PLATING WHITE INSULATOR



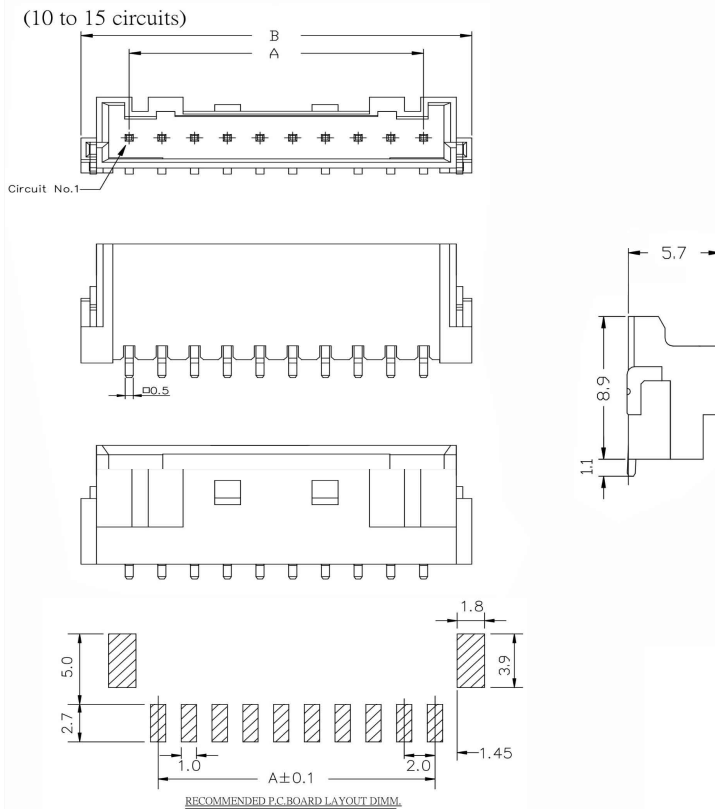
Specifications

Current Rating: 3A AC/ DC (Max)AWG#22
 Voltage Rating: 250V AC/ DC
 Temperature Range: -25°C ~ + 85°C
 Contact Resistance: 20mΩ Max
 Insulation Resistance: 1000MΩ Min
 Withstanding Voltage: 800V AC/Minute
 Pin : Brass/ Tin-plated/ Gold-flash
 Wafer Material: Nylon 6T,UL94V-0,natural
 Solder tab:Brass/Tin-plated

Poles	Dimension mm (in.)	
	A	B
10	18.0(0.709)	24.0(0.945)
11	20.0(0.787)	26.0(1.024)
12	22.0(0.866)	28.0(1.102)
13	24.0(0.945)	30.0(1.181)
14	26.0(1.024)	32.0(1.260)
15	28.0(1.102)	34.0(1.338)

ELECTRONIC COMPONENTS

2 W2112-XXPBTWX0R 2.0mm WAFER 1X??P SMT RIGHT ANGLE TYPE TIN PLATING WHITE INSULATOR

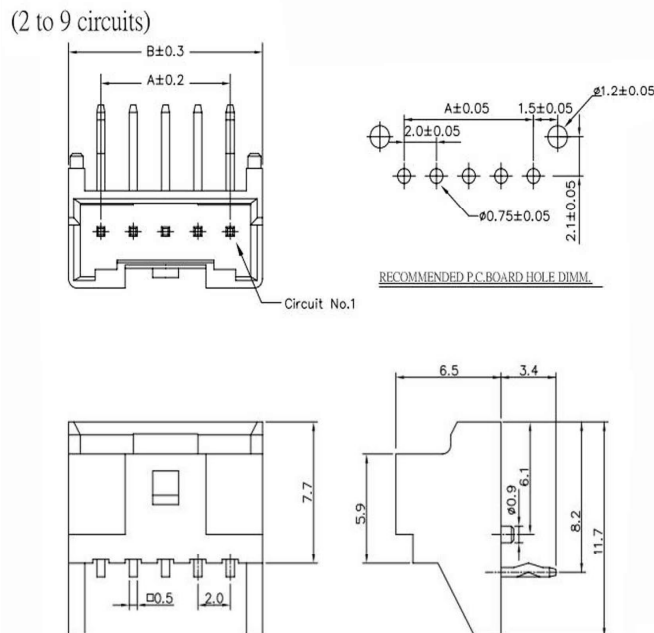


Specifications

Current Rating: 3A AC/ DC (Max)AWG#22
 Voltage Rating: 250V AC/ DC
 Temperature Range: -25°C ~ + 85°C
 Contact Resistance: 20mΩ Max
 Insulation Resistance: 1000MΩ Min
 Withstanding Voltage:800V AC/Minute
 Pin : Brass/ Tin-plated/ Gold-flash
 Wafer Material: Nylon 6T,UL94V-0,natural
 Solder tab:Brass/Tin-plated

Poles	Dimension mm (in.)	
	A	B
10	18.0(0.709)	24.0(0.945)
11	20.0(0.787)	26.0(1.024)
12	22.0(0.866)	28.0(1.102)
13	24.0(0.945)	30.0(1.181)
14	26.0(1.024)	32.0(1.260)
15	28.0(1.102)	34.0(1.338)

3 W2112-XXPRTW00R For 2P~9P 2.0mm WAFER 1X??P SMT RIGHT ANGLE TYPE TIN PLATING WHITE INSULATOR FOR 2~9P



Specifications

Current Rating: 3A AC/ DC (Max)AWG#22
 Voltage Rating: 250V AC/ DC
 Temperature Range: -25°C ~ + 85°C
 Contact Resistance: 20mΩ Max
 Insulation Resistance: 1000MΩ Min
 Withstand Voltage:800V AC/Minute
 Pin Material: Brass/ Tin-plated/ Gold-plated
 Wafer Material: Glass-filled PBT,UL94V-0,natural

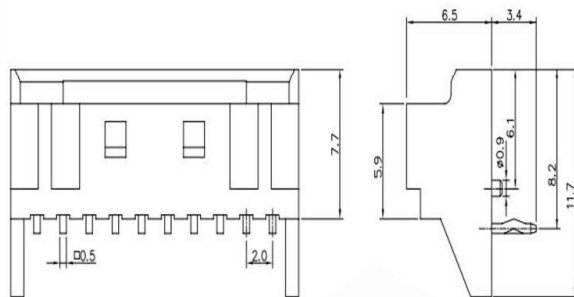
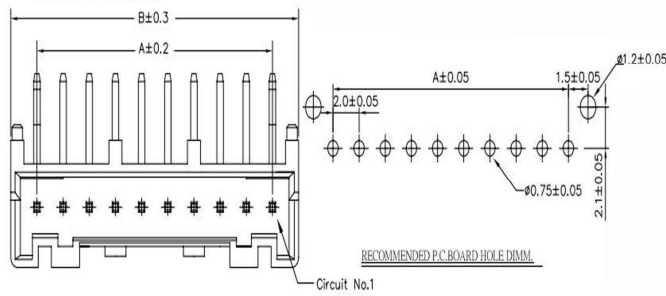
Poles	Dimension mm (in.)	
	A	B
2	2.0(0.079)	6.0(0.236)
3	4.0(0.157)	8.0(0.315)
4	6.0(0.236)	10.0(0.394)
5	8.0(0.315)	12.0(0.472)
6	10.0(0.394)	14.0(0.551)
7	12.0(0.472)	16.0(0.630)
8	14.0(0.551)	18.0(0.709)
9	16.0(0.630)	20.0(0.787)



ELECTRONIC

4 W2112-XXPRTW00R For 10P~15P 2.0mm WAFER 1X??P SMT RIGHT ANGLE TYPE TIN PLATING WHITE INSULATOR FOR 10~15P

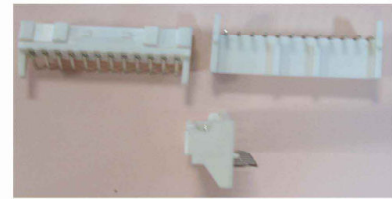
(10 to 15 circuits)



Specifications

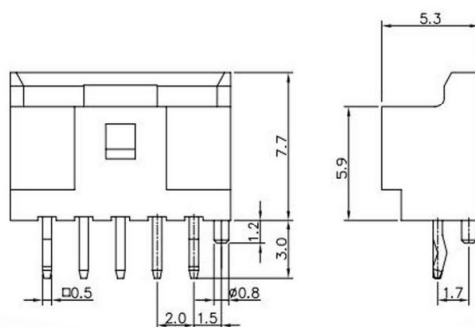
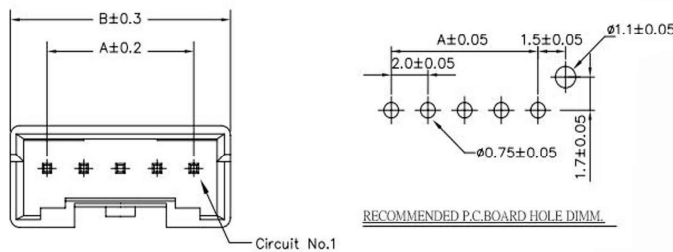
Current Rating: 3A AC/ DC (Max)AWG#22
 Voltage Rating: 250V AC/ DC
 Temperature Range: -25°C ~ + 85°C
 Contact Resistance: 20mΩ Max
 Insulation Resistance: 1000MΩ Min
 Withstand Voltage:800V AC/Minute
 Pin Material: Brass/ Tin-plated/ Gold-plated
 Wafer Material: Glass-filled PBT,UL94V-0,natural

Poles	Dimension mm (in.)	
	A	B
10	18.0(0.709)	22.0(0.866)
11	20.0(0.787)	24.0(0.945)
12	22.0(0.866)	26.0(1.024)
13	24.0(0.945)	28.0(1.102)
14	26.0(1.024)	30.0(1.181)
15	28.0(1.102)	32.0(1.260)



5 W2112-XXPSTW00R For 2P~9P 2.0mm WAFER 1X??P STRAIGHT TYPE TIN PLATING WHITE INSULATOR FOR 2~9P

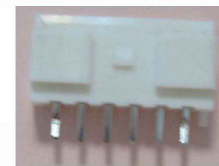
(2 to 9 circuits)



Specifications

Current Rating: 3A AC/ DC (Max)AWG#22
 Voltage Rating: 250V AC/ DC
 Temperature Range: -25°C ~ + 85°C
 Contact Resistance: 20mΩ Max
 Insulation Resistance: 1000MΩ Min
 Withstand Voltage:800V AC/Minute
 Pin Material: Brass/ Tin-plated/ Gold-plated
 Wafer Material: Glass-filled PBT,UL94V-0,natural

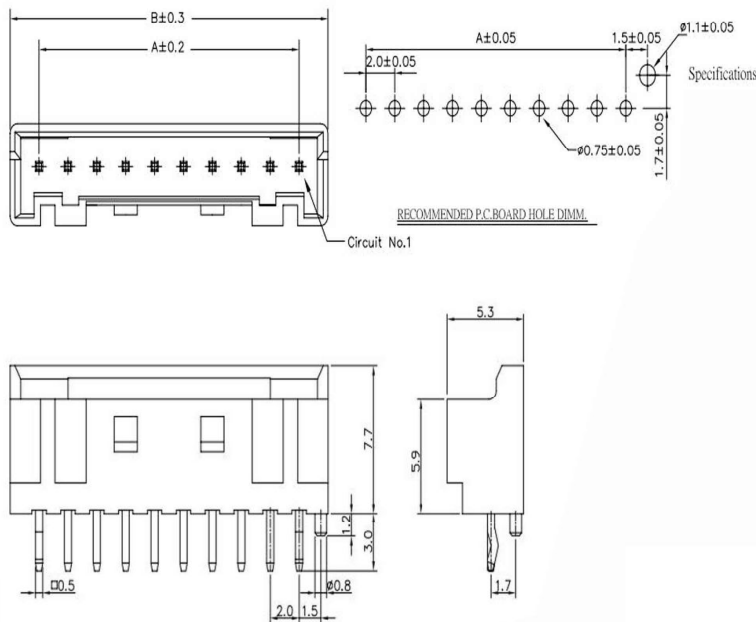
Poles	Dimension mm (in.)	
	A	B
2	2.0(0.079)	6.0(0.236)
3	4.0(0.157)	8.0(0.315)
4	6.0(0.236)	10.0(0.394)
5	8.0(0.315)	12.0(0.472)
6	10.0(0.394)	14.0(0.551)
7	12.0(0.472)	16.0(0.630)
8	14.0(0.551)	18.0(0.709)
9	16.0(0.630)	20.0(0.787)



ELECTRONIC COMPONENTS

6 W2112-XXPSTW00R For 10P~15P 2.0mm WAFER 1X??P STRAIGHT TYPE TIN PLATING WHITE INSULATOR FOR 10~15P

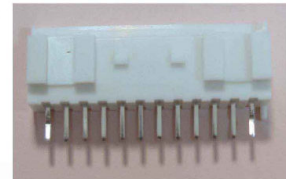
(10 to 15 circuits)



Specifications

Current Rating: 3A AC/DC (Max)AWG#22
 Voltage Rating: 250V AC/DC
 Temperature Range: -25°C ~ +85°C
 Contact Resistance: 20mΩ Max
 Insulation Resistance: 1000MΩ Min
 Withstand Voltage: 800V AC/Minute
 Pin Material: Brass/ Tin-plated/ Gold-plated
 Wafer Material: Glass-filled PBT,UL94V-0,natural

Poles	Dimension mm (in.)	
	A	B
10	18.0(0.709)	22.0(0.866)
11	20.0(0.787)	24.0(0.945)
12	22.0(0.866)	26.0(1.024)
13	24.0(0.945)	28.0(1.102)
14	26.0(1.024)	30.0(1.181)
15	28.0(1.102)	32.0(1.260)



ELECTRONIC COMPONENTS