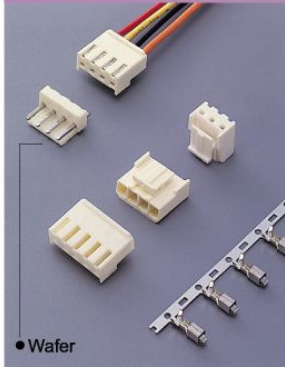


## W3966 Series 3.96mm Wafer



W	3966	—	02	P	S	T	W	0	0
1	2		3	4	5	6	7	8	9

1. PRODUCTS:  
W:Wafer

2. SERIES NO.:  
3966

3. CONTACT NO.:  
02-15

4. CONTACT TYPE:  
P:Non Distribution

5. FUNCTION:  
S:Straight  
R:Right Angle

6. CONTACT PLATING:  
T: Tin  
S: Selective Gold  
G: Gold Flash

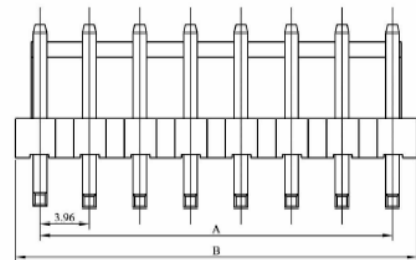
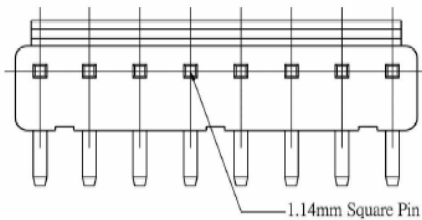
7. INSULATOR COLOR:  
W: White  
R: Red

8. FILL IT WITH "0"

9. FILL IT WITH "0"

1

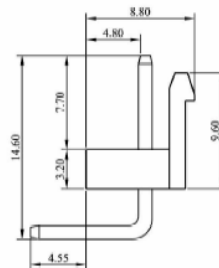
### W3966-XXPRTW00R JST VH 3.96mm WAFER 90°



PCB LAYOUT COMPONENT SIDE

## Specifications

Current Rating: 5A AC, DC  
Voltage Rating: 250V AC Maximum  
Operating Temp: -25°C - +85°C  
Contact Resistance: 20mΩ Max  
Insulation Resistance: 1000MΩ Min  
Dielectric Withstanding Voltage: 1500V AC, DC Min  
Terminal Material: Brass/Tin-plated  
Material: Nylon 66, UL94V-0

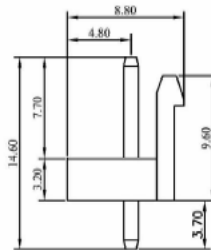
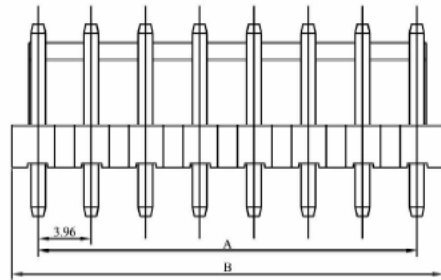
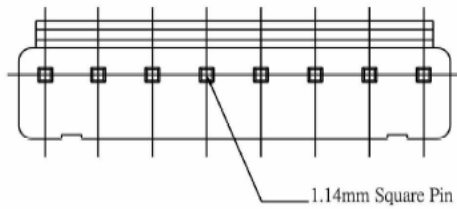


Poles	Dimension mm (in.)	
	A	B
2	3.96 (0.156)	7.92 (0.312)
3	7.92 (0.312)	11.88 (0.469)
4	11.88 (0.469)	15.84 (0.624)
5	15.84 (0.624)	19.80 (0.780)
6	19.80 (0.780)	23.80 (0.937)
7	23.76 (0.935)	27.88 (1.098)
8	27.72 (1.094)	31.74 (1.250)
9	31.68 (1.250)	35.56 (1.401)
10	35.64 (1.403)	39.50 (1.571)
11	39.60 (1.559)	43.44 (1.726)
12	43.56 (1.715)	47.32 (1.887)
13	47.52 (1.871)	51.24 (2.036)
14	51.48 (2.029)	55.22 (2.202)

ELECTRONIC  
COMPONENTS

2

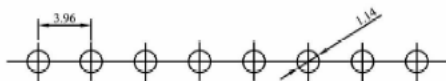
## W3966-XXPSTW00R JST VH 3.96mm WAFER 180°



### Specifications

Current Rating: 5A AC, DC  
Voltage Rating: 250V AC Maximum  
Operating Temp: -25°C ~ +85°C  
Contact Resistance: 10MΩ Max  
Insulation Resistance: 1000MΩ Min  
Terminal Material: Brass/Tin-plated  
Material: Nylon 66, UL94V-0

Poles	Dimension mm (in.)	
	A	B
2	3.96 (0.156)	7.92 (0.312)
3	7.92 (0.312)	11.88 (0.469)
4	11.88 (0.468)	15.84 (0.624)
5	15.84 (0.624)	19.80 (0.781)
6	19.80 (0.780)	23.76 (0.937)
7	23.76 (0.935)	27.80 (1.093)
8	27.72 (1.092)	31.74 (1.250)
9	31.68 (1.247)	35.66 (1.402)
10	35.64 (1.403)	39.60 (1.551)
11	39.60 (1.559)	43.54 (1.726)
12	43.56 (1.715)	47.50 (1.887)
13	47.52 (1.871)	51.44 (2.036)
14	51.48 (2.027)	55.39 (2.202)



PCB LAYOUT COMPONENT SIDE

ELECTRONIC  
COMPONENTS