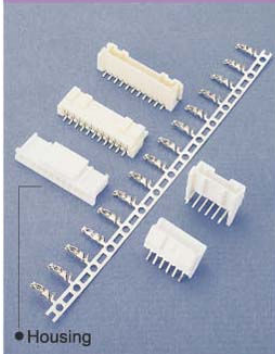


H2012 Series 2.0mm Crimp Terminal Housing



H	2012	—	02	P	Y	W	0	0	0
1	2		3	4	5	6	7	8	9

1. PRODUCTS:
H:Housing

2. SERIES NO.:
2012

3. CONTACT NO.:
02-15

4. CONTACT TYPE:
P:Non Distribution

5. BODY OPTION:
Y:With Locking Rib

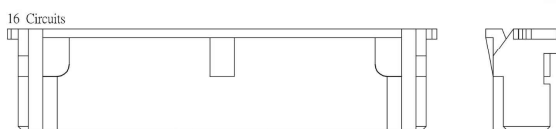
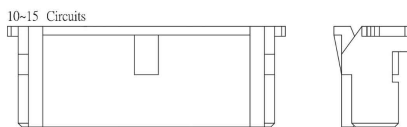
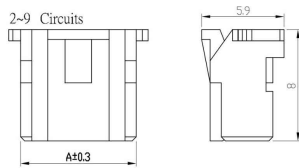
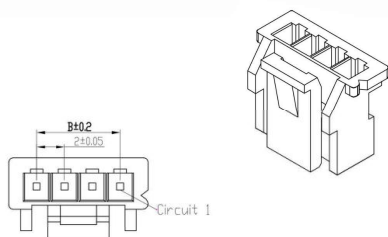
6. INSULATOR COLOR:
W:White

7. FILL IT WITH "0"

8. FILL IT WITH "0"

9. FILL IT WITH "0"

H2012-XXPYW000R 2.0mm HOUSING 1X??P WHITE LOCKING RIB WHITE COLOR

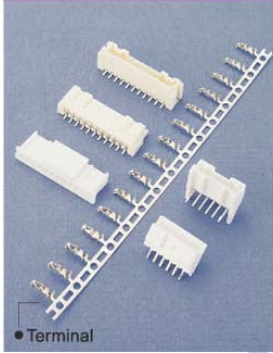


MAT'L: NYLON 66 UL94V-0
CURRENT RATING: 3A AC, DC
VOLTAGE RATING: 250V AC DC

Circuits	DIM:(mm)	
	A	B
2	4.30	2.00
3	6.30	4.00
4	8.30	6.00
5	10.30	8.00
6	12.30	10.00
7	14.30	12.00
8	16.30	14.00
9	18.30	16.00
10	20.30	18.00
11	22.30	20.00
12	24.30	22.00
13	26.30	24.00
14	28.30	26.00
15	30.30	28.00
16	32.30	30.00

ELECTRONIC
COMPONENTS

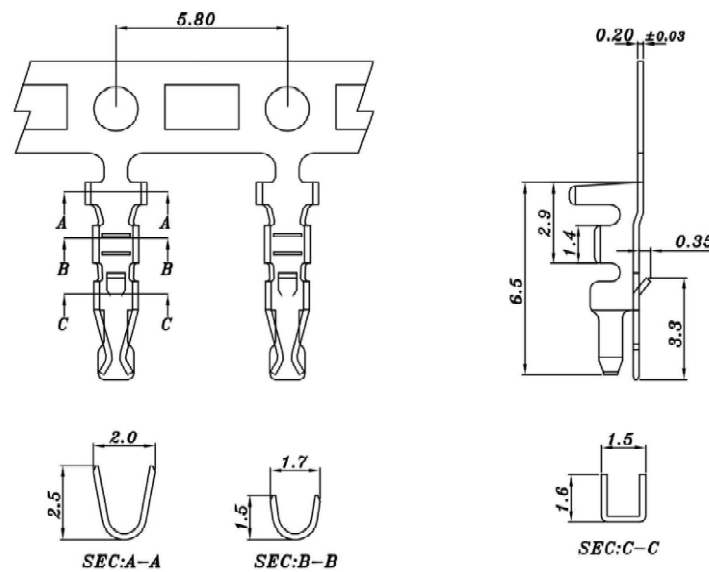
T2012 Series 2.0mm Crimp Contacts



T	2012	T	P	J	0	0	0	0	0
1	2	3	4	5	6	7	8	9	10

- | | | |
|------------------------------|---|---------------------|
| 1. PRODUCTS:
T:Terminal | 4. MATERIAL:
P:Phosphor Bronze | 7. FILL IT WITH"0" |
| 2. SERIES NO.:
2012 | 5. WIRE OPTION:
J:Suitable For 22-28 Awg | 8. FILL IT WITH"0" |
| 3. CONTACT PLATING:
T:Tin | 6. FILL IT WITH"0" | 9. FILL IT WITH"0" |
| | | 10. FILL IT WITH"0" |

T2012-TPJ00000R 2.0mm TERMINAL MATERIAL PHOSPHOR BRONZE SUITABLE FOR AWG22~28AWG TIN PLATED 1R=10K



THICKNESS: 0.2mm
 MAT'L: PHOSPHOR BRONZE TIN PLATED
 CURRENT RATING: 3A AC,DC
 VOLTAGE RATING: 100V AC,DC
 APPLICABLE WIRE RANGE: AWG#22-28

ELECTRONIC
COMPONENTS