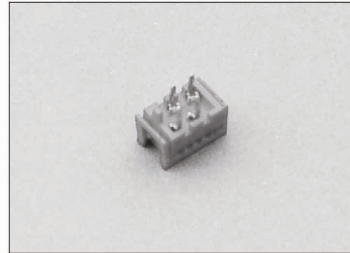


# 660E

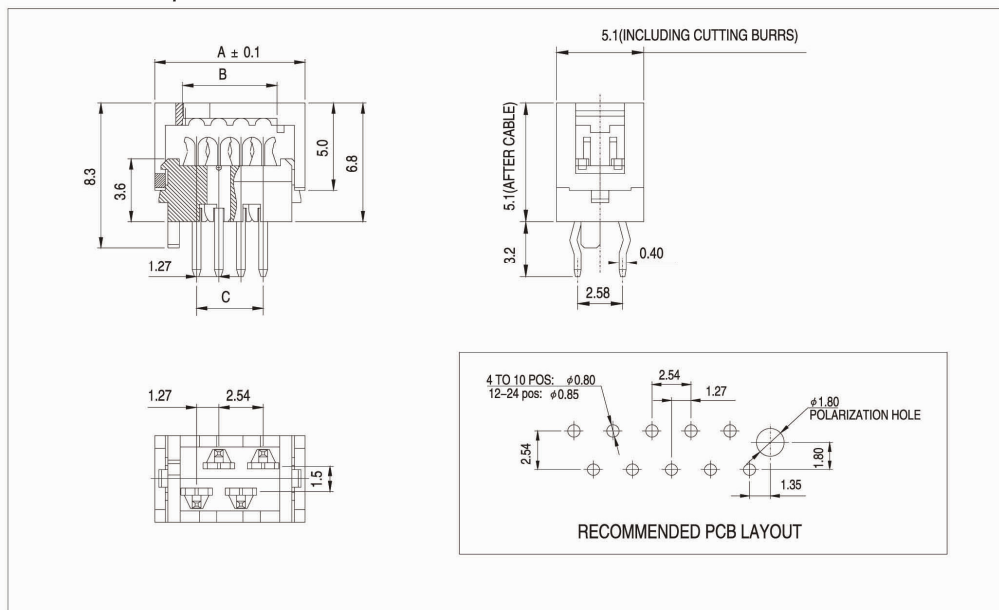
Paddle Board Type 1.27 Pitch(Mini-Match connector)

## Technical Data :

Insulator:	Thermoplastic Polyester,PBT rated UL94-V0
Color Insulator:	Red
Contact:	Phosphor bronze
Plating :	Tin over Nickel
Operating temperature:	-40 °C to+105 °C
Current rating:	1 Amp
Contact resistance:	20 milliohms Max.
Insulation resistance:	1000m min. at DC 100V
Dielectric withstanding:	AC 500V for 1 minute
Wire size:	28AWG



## RoHS Compliant



## How to order

serie-nr      Nr. of contact      Plating      Packing

Nr. Of contact	DIMENSIONS		
	A	B	C
04	8,6	5,4	3,81
06	11,1	8,0	6,35
08	13,6	10,5	8,89
10	16,2	13,0	11,43
12	18,7	15,6	13,97
14	21,3	18,1	16,51
16	23,8	20,7	19,05
18	26,3	23,2	21,59
20	28,9	25,7	24,13
24	34,0	30,8	29,21

Plating option	Code
Tin plated	50
Selective gold flash plated	60

Packing opt on	Code
Tube	1

ELECTRONIC COMPONENTS